



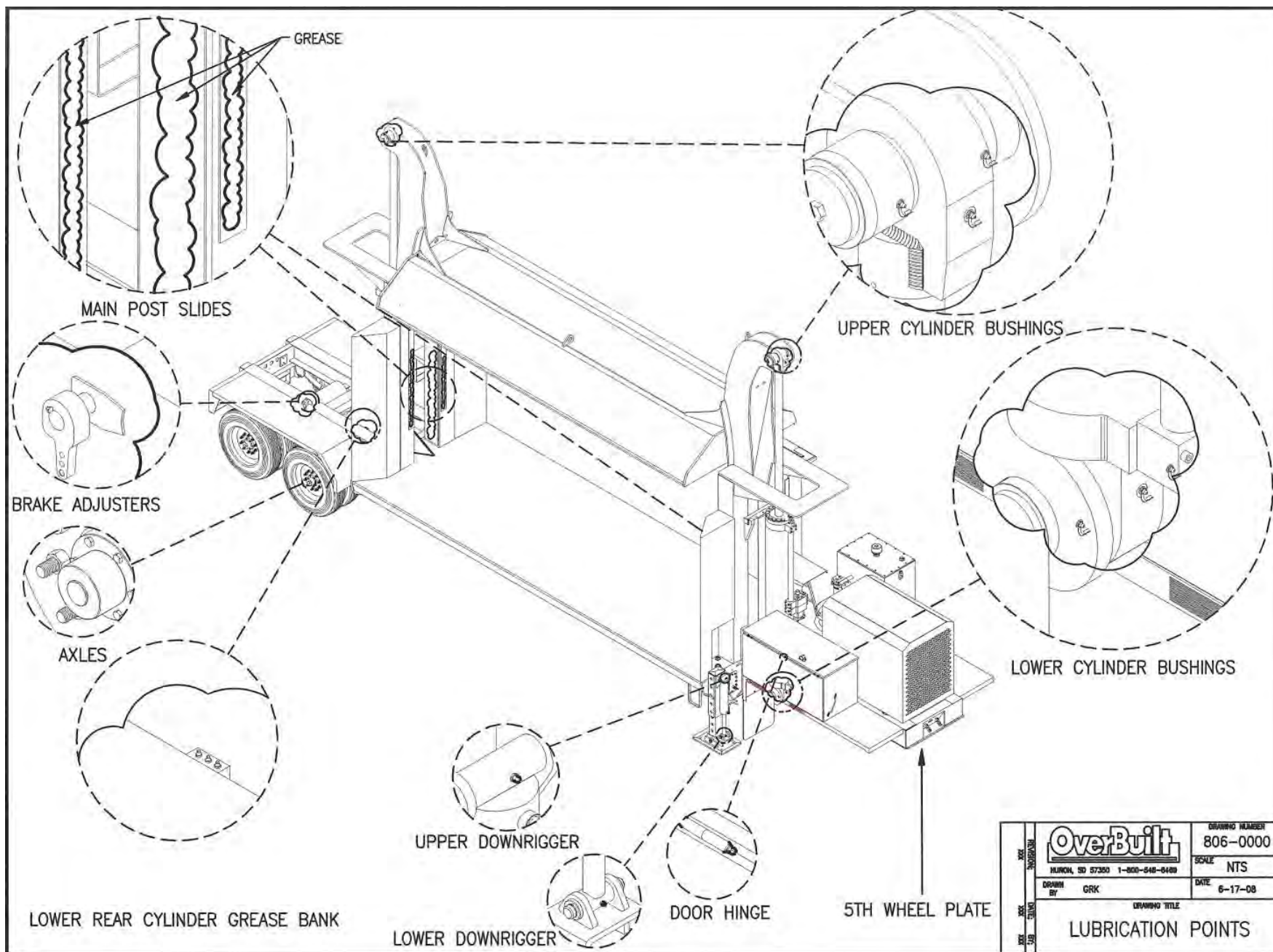
LUBRICATION & MAINTENANCE

**MODEL 10 AND MODEL 10 HS
PORTABLE AND STATIONARY
CAR CRUSHER**

**Huron, South Dakota
(605) 352-6469**

Overbuilt Car Crusher

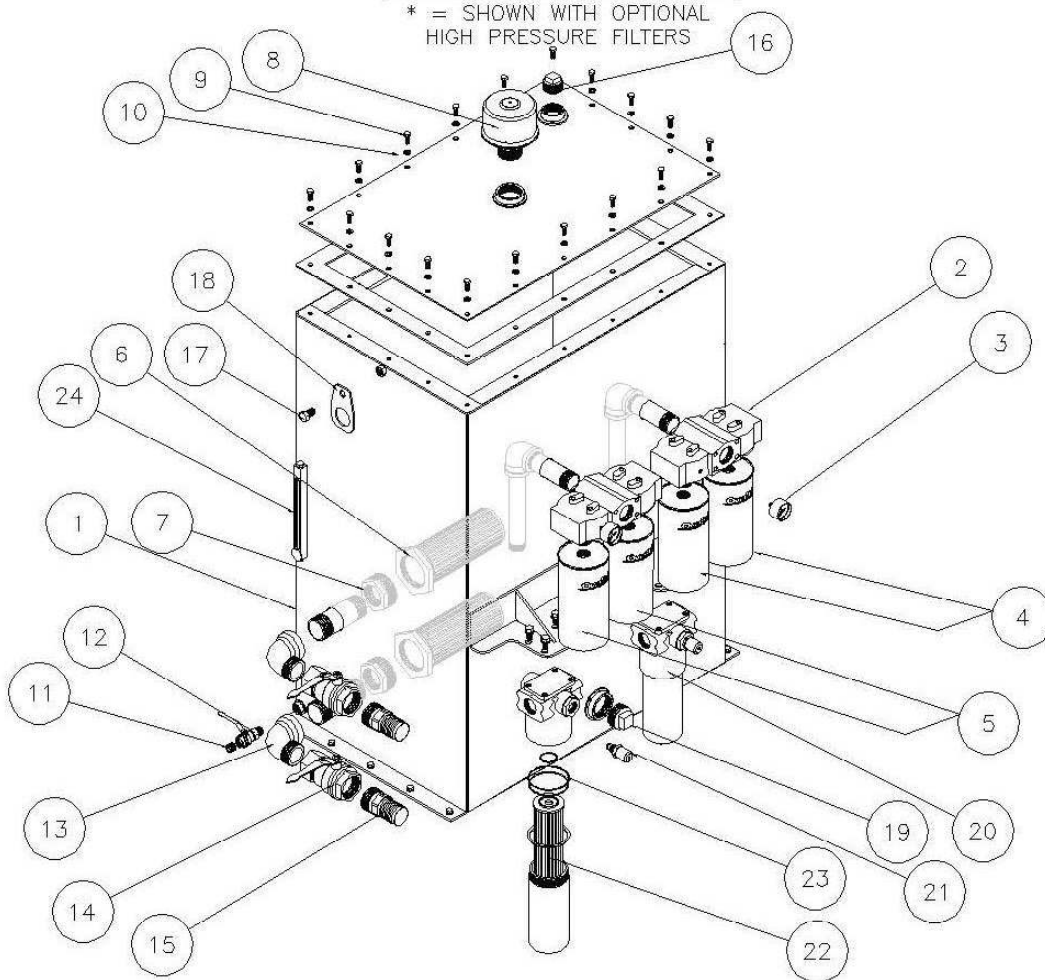
	<u>Approximate Duration</u>	<u>Brand</u>	<u>Filter #</u>	<u>OverBuilt Order #</u>	<u>Order Info.</u>
Hydraulic Oil	1000 hours or annually	ISO 46			OverBuilt 780 West Park Ave. NW Huron, SD 57350 605-352-6469
High Pressure Filters (two replacement filter cartridges)	1000 hours, gauge or annually	MP FILTRI	HP3202A10AN	332-0009	
Hydraulic Filters					
10 Micron Nominal (two replacement filters)	500 hours, gauge or annually	OverBuilt	332-1010N	332-1010N	
10 Micron Water Absorbing (two replacement filters)	500 hours, gauge or annually	OverBuilt	332-1010W	332-1010W	
Fuel Filters					
Pre Filter on Frame & Auxiliary Fuel Pump	250 - 500 hours or annually	NAPA Carquest	4348 89348	332-1004F	
Engine Fuel Filters (Final)	250 - 500 hours or annually	see engine manual			
Engine Fuel Filters (Pre)	250 - 500 hours or annually	see engine manual			
Air Cleaners					
Primary Element	250 - 500 hours, air restriction indicator or annually	see engine manual			
Safety Element	250 - 500 hours, air restriction indicator or annually	see engine manual			
Oil Filter	250 - 500 hours or annually	see engine manual			
Grease					
Main Post Slides Depending on dust conditions	Daily	<div style="border: 1px solid black; padding: 10px; text-align: center;"> Check All Fluid Levels & Visually Inspect Crusher Daily </div>			
Cylinder Bushings (6-Points per cylinder)	Daily				
Landing Gear	Weekly depending on usage				
Axles	Weekly depending on usage				



OverBuilt HUNICH, SD 57350 1-800-648-6489		DRAWING NUMBER	806-0000
		SCALE	NTS
DRAWN BY	GRK	DATE	6-17-08
DATE		DRAWING TITLE	
REV		LUBRICATION POINTS	

HYDRAULIC OIL TANK

* = SHOWN WITH OPTIONAL
HIGH PRESSURE FILTERS



OverBuilt

Parts List

ITEM	QTY	PART NO.	ITEM
1	1	804-4501	Oil Tank Assembly
2	2	332-0007	Dual Filter Head
3	2	335-1001	Filter Gauge
4	2	332-1010N	Filter Element (Nominal)
5	2	332-1010W	Filter Element (Water)
6	2	332-0130	Suction Strainer
7	2	336b-6410-48-32	3" to 2" Reducer Bushing
8	1	332-0080	Breather Canister
9	18	205-0606	$\frac{3}{8}$ "-16 x $\frac{3}{4}$ " Bolts
10	18	205-6406	$\frac{3}{8}$ " Lock Washers
11	1	336-5406-H-8	$\frac{1}{2}$ " Hex Head Plug
12	1	331-6008-1	$\frac{1}{2}$ " Ball Valve
13	2	336B-5502-32	2" Street Elbow
14	2	331-6032	2" Ball Valve
15	2	336B-KN32	2" Barb King Nipple
16	2	336B-5406-24	1 $\frac{1}{2}$ " Black Pipe Plug
17	2	205-1008	$\frac{3}{8}$ "-11 x 1" Bolts
18	2	800-9078	Lifting Provisions
19	1	336b-5406-32	2" Heater Provision Plug
20	2	332-0008	High Pressure Filter Canister
21	2	332-0007V7	Visual Filter Gauge
22	2	332-0009	High Pressure Filter Element
23	2	332-0009s	Filter Seal-O-Ring Kit
24	2	335-1100	Liquid Level Gauge w/thermometer

808-0003B

CYLINDER ASSEMBLY
STANDARD SPEED

100 LBS TORQUE

1, 2, 3, 4

Parts List

[illegible]

CYLINDER ASSEMBLY w/ HIGH SPEED

100 LBS TORQUE

1

2

3

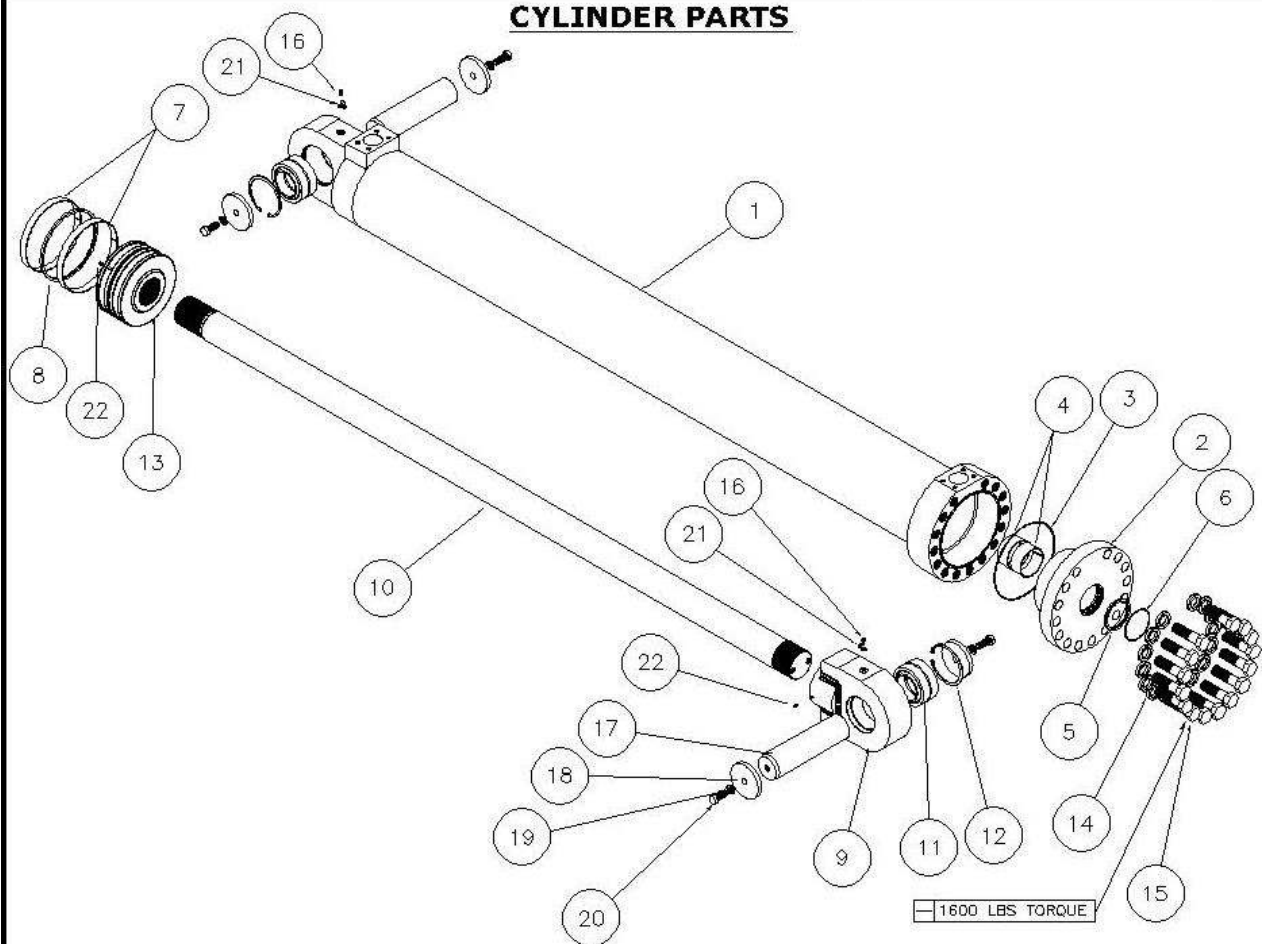
4

5

OverBolt

[illegible]

CYLINDER PARTS



808-0001

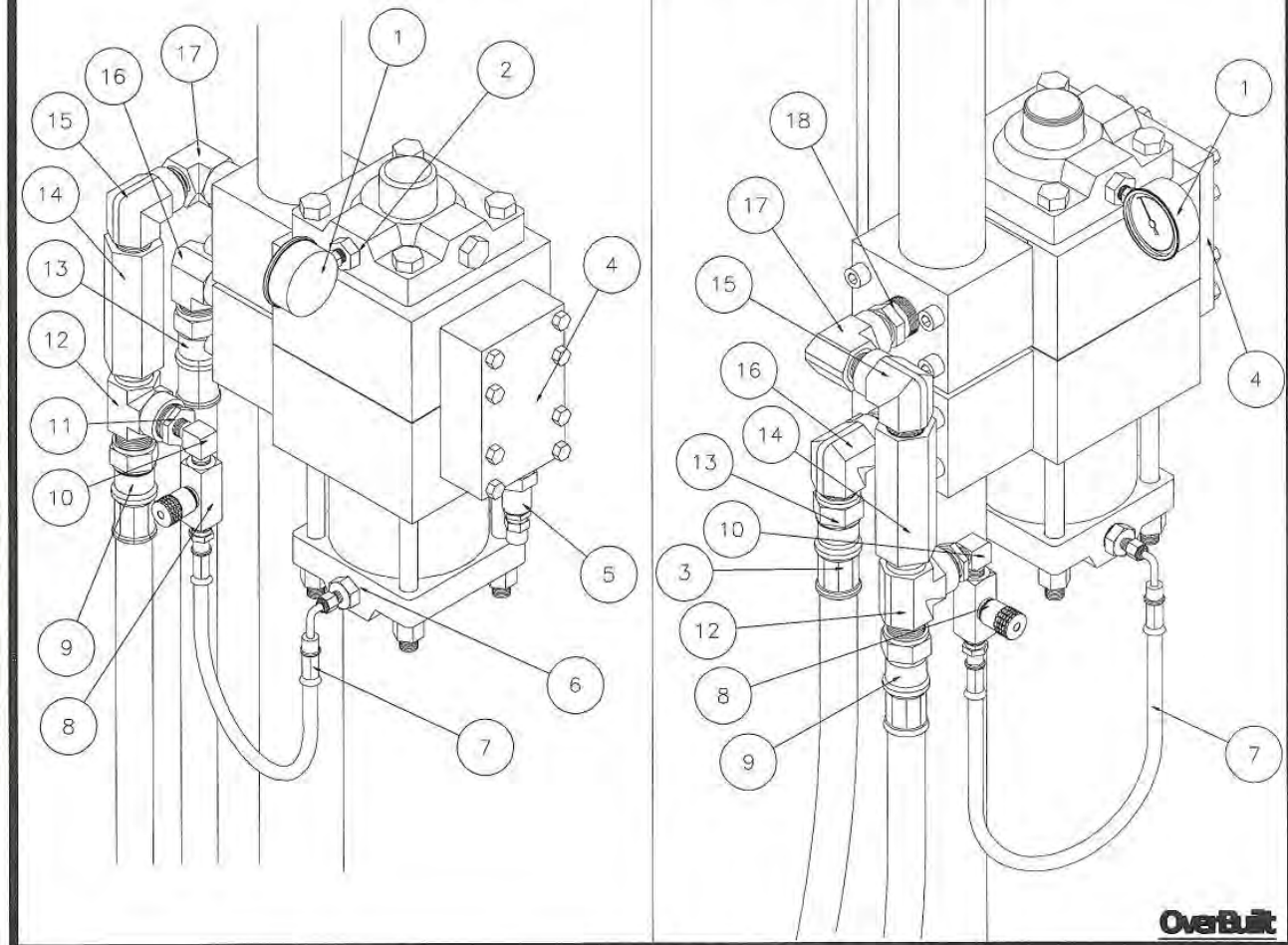
OverBuilt

Parts List

ITEM	QTY	PART NO.	ITEM
1	1	804-0001	Cylinder Assembly
2	1	802-0200	Cylinder Top Gland
3	1	333-m270	Top Gland Seal
4	2	334-4004	Rod Wear Rings
5	1	334-1040	Deep Z Rod Seal
6	1	334-0004	Rod Wiper
7	2	334-4010	Piston Wear Rings
8	1	334-2010	Piston Crown Seals
9	1	804-0606	Cylinder Rod End Assembly
10	1	802-0400	Cylinder Rod
11	2	360-0500	Radial Bushing
12	2	226-2010	Bushing Snap Ring
13	1	802-0300	Cylinder Piston
14	15	208-6820	1-1/4 Lock Washers
15	15	208-2032	1-1/4 x 4 Grade 8 Bolts
16	2	216-0512	Grease Fittings
17	2	802-0009	Cylinder Pins
18	2	800-0105	Pin Plates
19	4	205-6412	3/4 Lock Washers
20	4	205-1216	3/4-10 x 2" Grade 5 Bolts
21	2	361-0500	Grease Zerk Cap
22	2	210-0512	Dognose Set Screw - 5/16-18 x 3/4

ALL SEALS IN A KIT
NOT SOLD SEPARATE
PART NO. 806-0910

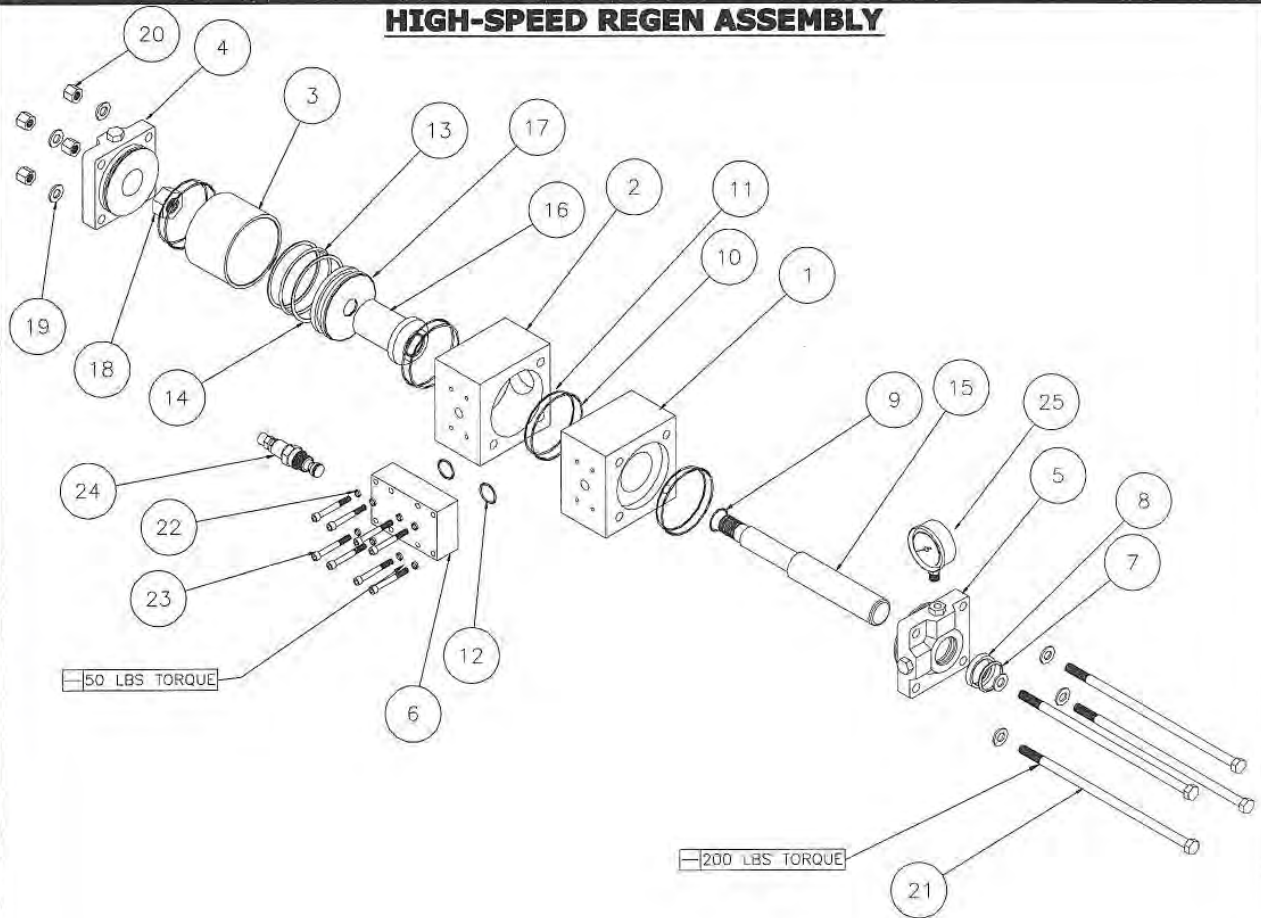
HIGH-SPEED HYDRAULIC FITTINGS



Parts List

ITEM	QTY	PART NO.	ITEM
1	1	335-1010	Pressure Gauge 0-5000 P.S.I.
2	1	336-6405-10-4	$\frac{7}{8}$ " M-O-Ring X $\frac{1}{4}$ " FMPT
3	1	346-0044-53/83	Hydraulic Hose 53"(Rear)83" (Front)
4	1	802-0930	Relief Manifold
5	1	331-3021	Relief Spool 3000 P.S.I.
6	1	336-6400-4-10	$\frac{1}{4}$ " MJIC X $\frac{5}{8}$ " M-O-Ring
7	1	346-0044-26	High Speed Regen Block Hose
8	1	331-4106	Needle Valve #6 NPT
9	1	346-0044-50/83	Hydraulic Hose 50"(Rear)83"(Front)
10	1	336-5500-06-06	$\frac{3}{8}$ " MNPT 90°
11	1	336-5406-16-06	Reducer Bushing 1" X $\frac{3}{8}$ "
12	1	336-2611-16-16-16	1" MJIC X 1" MNPT X 1" FNPT
13	1	346-0044-53	Hydraulic Hose 53"
14	1	331-5016	Check Valve #16 FPT
15	1	336-5502-16-16	1" MNPT X 1" FNPT 90°
16	1	336-2502-16-16	1" MJIC X 1" FNPT 90°
17	1	336-5502-16-16	1" MNPT X 1" FNPT 90°
18	2	336-5404-16	1" Straight Male Pipe

HIGH-SPEED REGEN ASSEMBLY

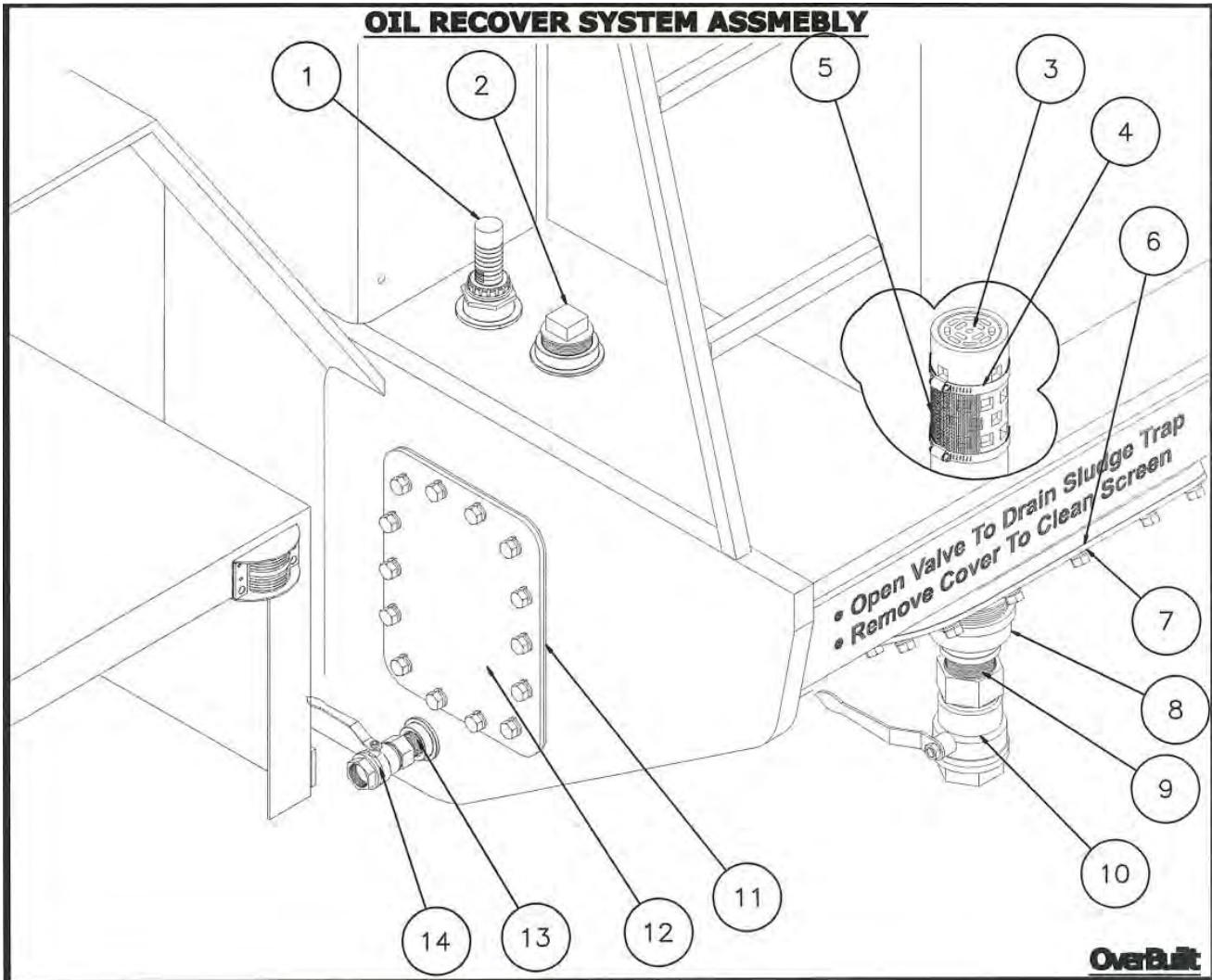


OverBolt

ITEM	QTY	PART NO.	ITEM
1	1	802-0920	Top Section (Small)
2	1	802-0900	Bottom Section (Large)
3	1	802-0990	Cylinder Tube
4	1	330-65255	Cylinder Bottom
5	1	330-65256	Cylinder Top
6	1	802-0930	Relief Manifold
7	1	330-65253	Rod Wiper Seal (Outer)
8	1	330-65252	Rod Wiper Seal (Inner)
9	1	333-0224	Shaft O-Ring
10	4	333-1248	Tube To Block Back-up O-Ring
11	4	333-0248	Tube To Block O-Ring
12	2	333-0219	Relief Block O-Ring
13	1	330-652500	Piston O-Ring
14	2	330-65250	Piston O-Ring Spacers
15	1	802-0970	Cylinder Shaft
16	1	802-0980	Cylinder Sleeve
17	1	330-65259	Cylinder Piston
18	1	330-65251	1 1/4" Locking Nut
19	8	208-6210	5/8" Thru Hard Washers
20	4	209-8610	5/8"-18 Flange Nuts
21	4	209-10128	5/8"-18 x 16 UNF Cylinder Bolts
22	8	215-6406	3/8" High Collar Washers
23	8	216-0622	3/8"-16 x 2 1/4" Socket Head Screws
24	1	331-3021	Pressure Relief Valve
25	1	335-1010	Pressure Gauge (0-5000 LBS)

ALL SEALS IN A KIT
NOT SOLD SEPARATE
PART NO. 806-0900

OIL RECOVER SYSTEM ASSEMBLY



Parts List

ITEM	QTY	PART NO.	ITEM
1	1	335-1121	Oil Level Gauge
2	1	336b-5406-32	Fill Plug
3	1	802-3021	Drain Cover
4	2	342-8056	Screen Clamp
5	1	332-0002	Perforated Screen
6	2	802-3012g	Cover Gasket
7	1	802-3012	Cover
8	1	336b-6400-32-48	Bell Reducer
9	1	336b-5404-32	Close Nipple
10	1	331-6032	2" Ball Valve
11	1	802-3051g	Cover Plate Gasket
12	1	802-3051	Cover Plate
13	1	336b5404-16	Close Nipple
14	1	331-6016	1" Ball Valve

Electric Motor Maintenance

Preventative Ongoing Maintenance:

- A. Exterior cleaning – wipe down all motors with a soft cloth and, whenever possible, use compressed air to hose the motor housing, in between the cooling ribs and at the fan and fan cover sections.
- B. Follow the bearing lubrication schedule provided by the manufacturer! 95% of all motor problems are bearing problems. **(USE POLYUREA GREASE ONLY)**

LUBRICATION SCHEDULE (IN HOURS)				
Horsepower	DE Bearing	Grease Amt (Oz.)	ODE Bearing	Grease Amt (Oz.)
100	3000	1.22	6500	0.86

- C. Monitor the bearing temperature on the motor, especially the drive-end bearing, to ensure it does not exceed 140°F (60°C).
- D. Whenever possible, have the insulation checked periodically by an authorized motor specialist.
- E. Whenever possible, follow a bearing maintenance program of purging the grease completely through the bearings every six months and replacing the bearings when the recommended L-10 life (in running hours) expires. WorldWide Electric Motors have SKF premium quality bearings. The L-10 life of these bearings are as follows:
 - 1. Belt drive applications – 50,000 hours
 - 2. Direct coupled applications – 100,000 hours

Shut Down Timer Instructions

- A. Motor will shut down after 20 minutes when a function button on the transmitter or receiver is not used.
- B. Restart: Turn on transmitter and press left or right down.

Auto – Manual Switch

- A. To start electric motor with automation transmitter, turn switch to auto position.
- B. To start electric motor manually, turn switch to manual position.



OPERATOR MAINTENANCE RECORD

ITEM	DATE	HOURS	SERVICED BY	COMMENTS
250 HOUR SERVICE				
Fuel Filters				
Auxiliary Fuel Pump Filter				
Engine Pre-Filter				
Engine Final Filter				
Air Cleaner				
Primary Element				
Secondary Element				
Engine				
See Engine Manual				
500 HOUR SERVICE				
Fuel Filters				
Auxiliary Fuel Pump Filter				
Engine Pre-Filter				
Engine Final Filter				
Air Cleaner				
Primary Element				
Secondary Element				
Engine				
See Engine Manual				
Hydraulic Filters				
10 Micron Nominal				
10 Micron Water				
750 HOUR SERVICE				
Fuel Filters				
Auxiliary Fuel Pump Filter				
Engine Pre-Filter				
Engine Final Filter				
Air Cleaner				
Primary Element				
Secondary Element				
Engine				
See Engine Manual				
1000 HOUR/12 MONTH SERVICE				
Fuel Filters				
Auxiliary Fuel Pump Filter				
Engine Pre-Filter				
Engine Final Filter				
Air Cleaner				
Primary Element				
Secondary Element				
Engine				
See Engine Manual				
Hydraulic Filters				
10 Micron Nominal				
10 Micron Water				
High Pressure Hydraulic Filters				
Filter Cartridges				
Hydraulic Oil				
Change Oil				

**CHECK ALL FLUID LEVELS, GREASE &
VISUALLY INSPECT CRUSHER DAILY**