



LUBRICATION & MAINTENANCE

**MODEL 20 BL
PORTABLE
BALER/LOGGER**

**Huron, South Dakota
(605) 352-6469**

Overbuilt Baler/Logger

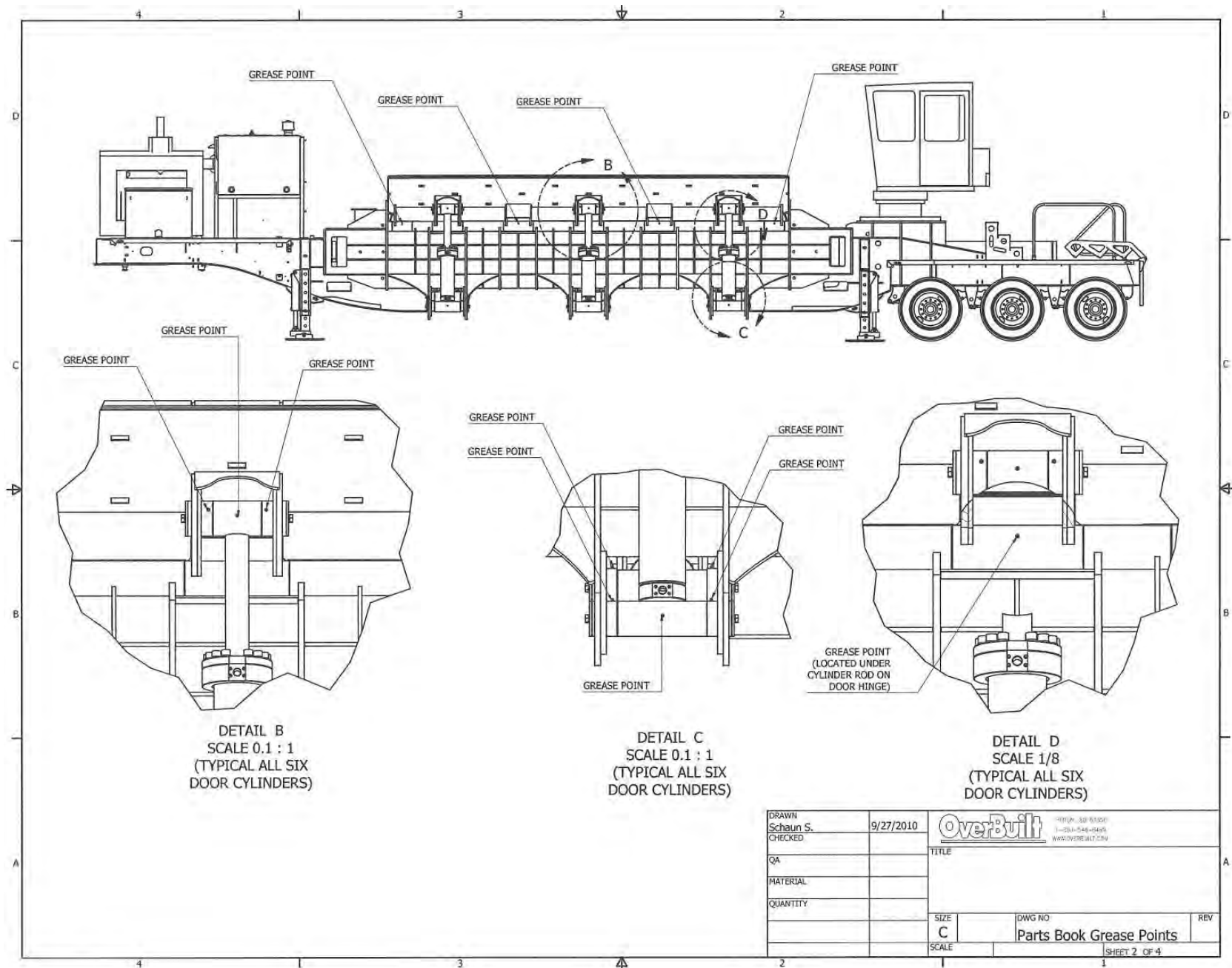
	<u>Approximate Duration</u>		<u>OverBuilt Order #</u>
Hydraulic Oil	1000 hours or annually	Multi Viscosity - 46	
High Pressure Filters (Three replacement filter cartridges)	500 hours, gauge or annually	Parker	332-0053F
High Pressure Filters Seal Kit	500 hours, gauge or annually	Parker	332-0053S
Hydraulic Filters			
10 Micron In Tank Filter	250 hours, gauge or annually	Schroeder	332-0051
Loader Pilot Filter	250 hours, gauge or annually	OverBuilt	332-0058
Fuel Filters			
Engine Fuel Filters (Final)	250 - 500 hours or annually	see engine manual	
Engine Fuel Filters (Pre)	250 - 500 hours or annually	see engine manual	
Air Cleaners			
Primary Element	250 - 500 hours, air restriction indicator or annually	see engine manual	
Safety Element	250 - 500 hours, air restriction indicator or annually	see engine manual	
Oil Filter	250 - 500 hours or annually	see engine manual	
Grease			
Door Pins Depending on dust conditions	Daily		
Cylinder Bushings (6-Points per cylinder)	Daily		
Loader & Grapple (see loader manual - use molybdenum grease only on rotation bearing)	Daily		
Landing Gear	Weekly depending on usage		
Axles	Weekly depending on usage		

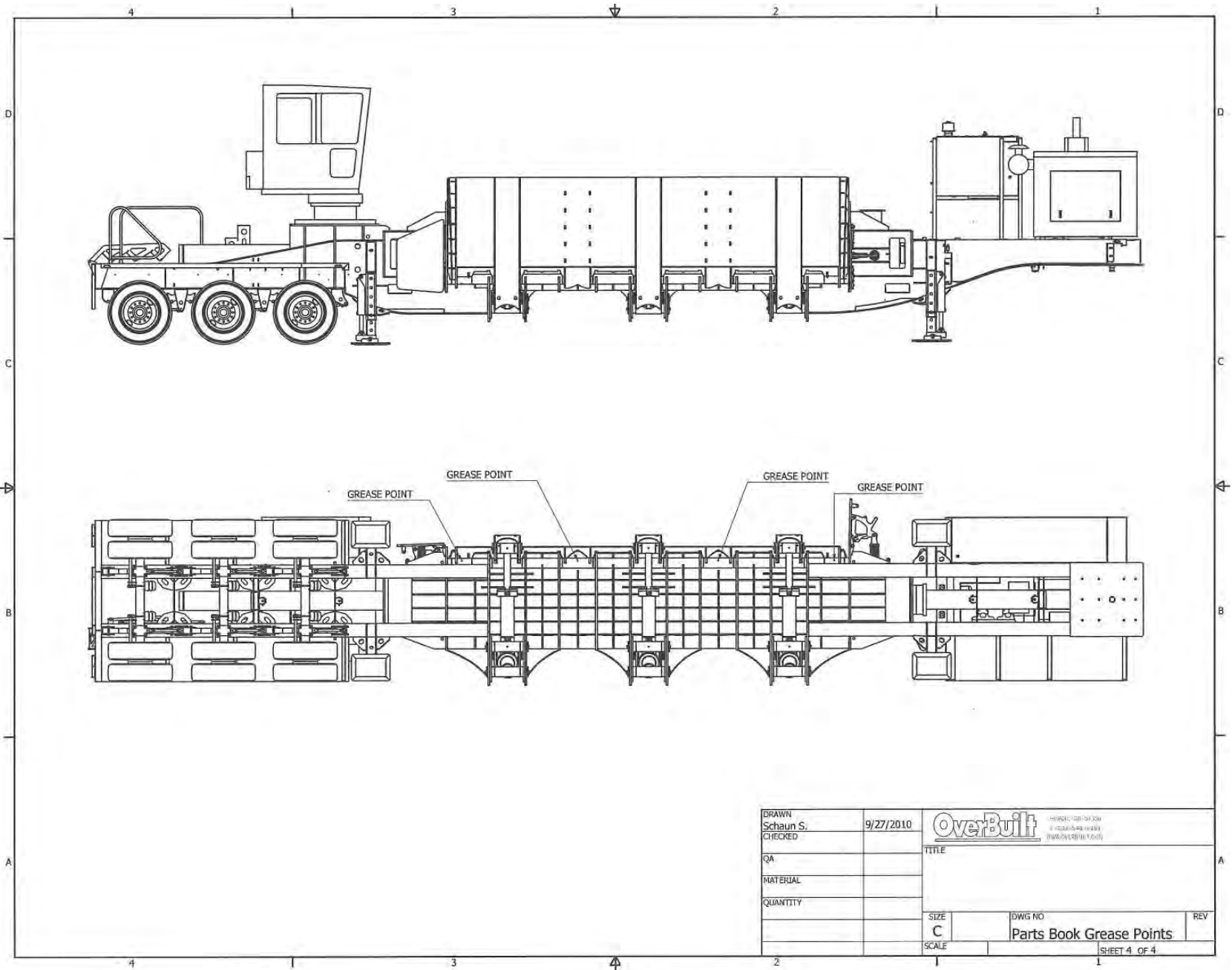
**Check All Bolts,
Fittings, Fluid
Levels & Visually
Inspect
Baler/logger Daily**


Order Info.

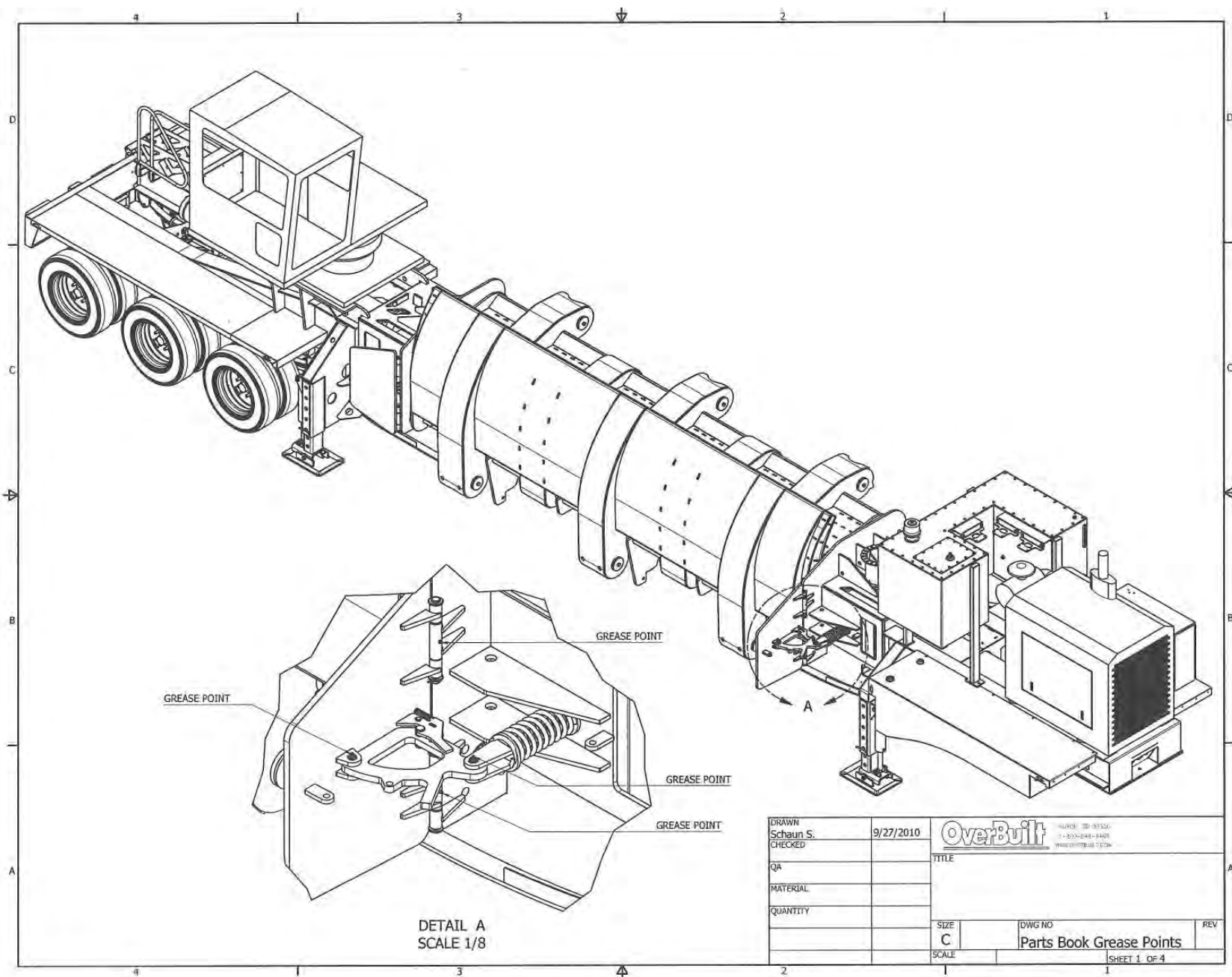
OverBuilt
780 West Park Ave. NW
Huron, SD 57350
605-352-6469

OverBuilt




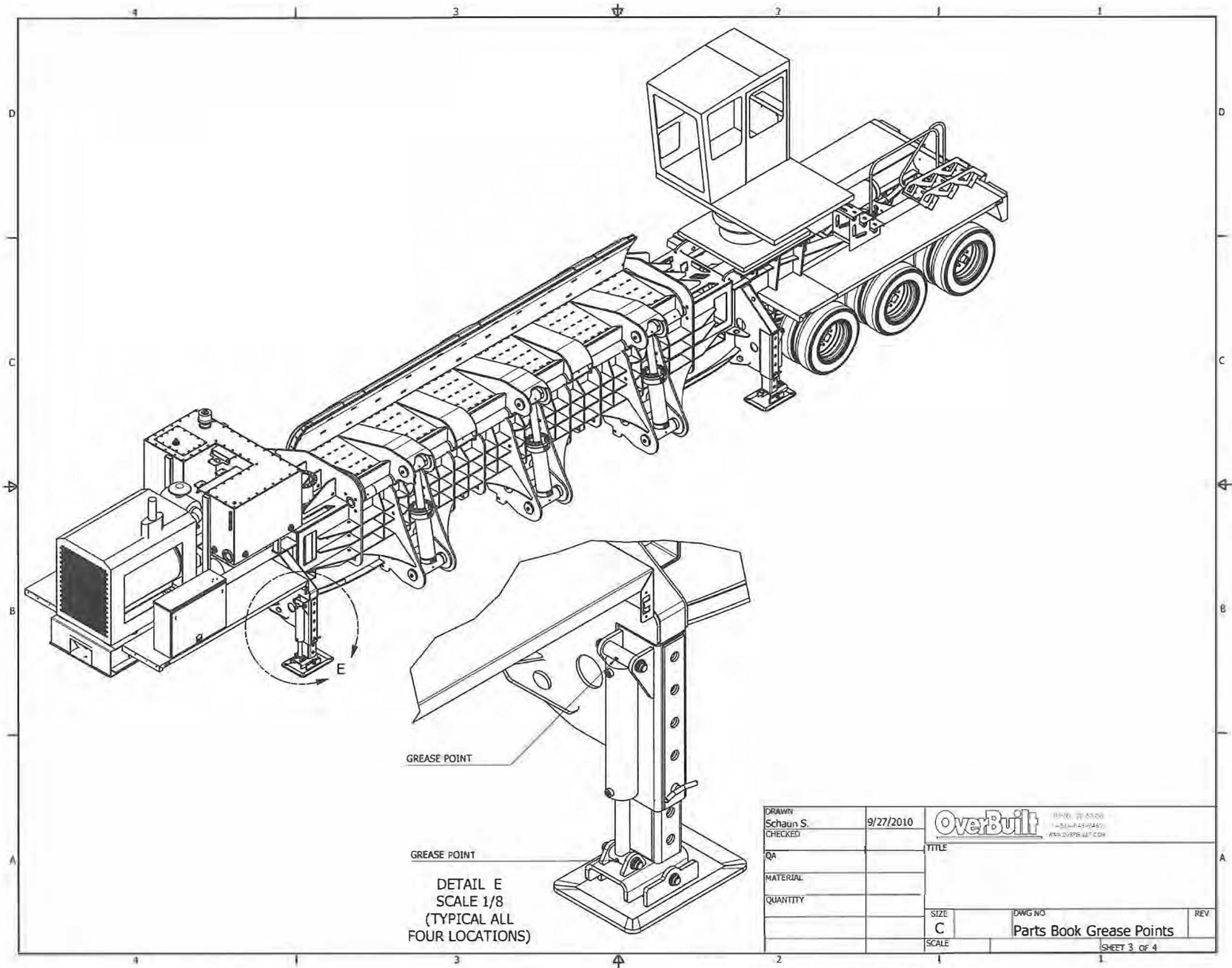


DRAWN Schaun S.	9/27/2010	 <small>HEROLD/GB-DAI 20W © 2009 OverBuilt Inc. www.overbuilt.com</small>	
CHECKED		TITLE	
QA			
MATERIAL			
QUANTITY			
		SIZE C	DWG NO
		Parts Book Grease Points	
		SCALE	REV
		SHEET 4 OF 4	

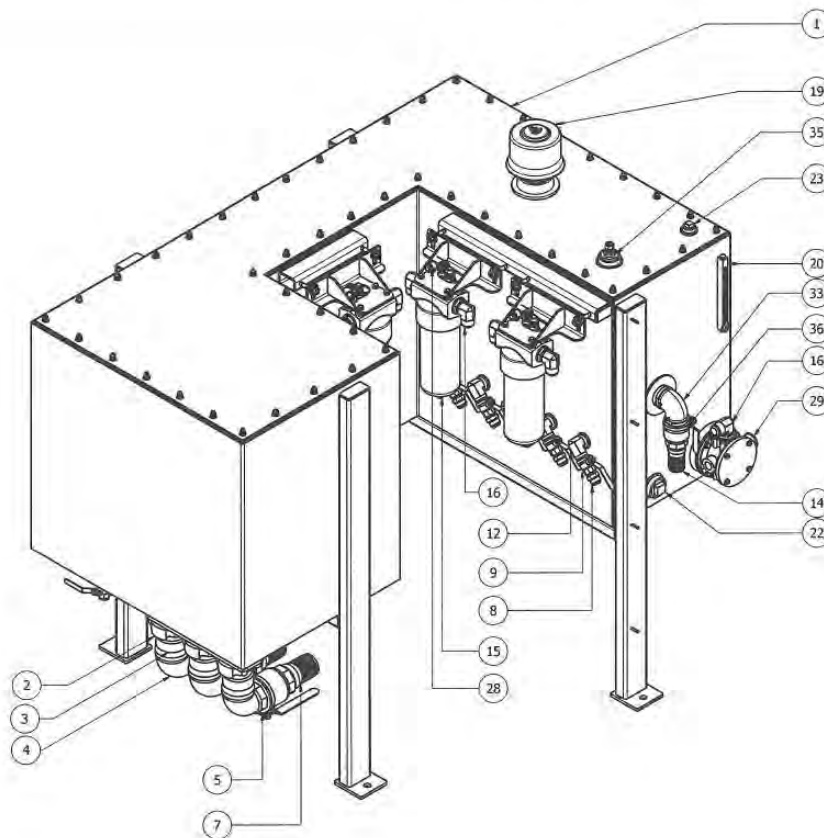


DETAIL A
SCALE 1/8

DRAWN Schaun S.		9/27/2010		 <small> HUNTER: 780-875326 1-800-248-8449 WWW.OVERBUILT.COM </small>	
CHECKED					
QA				TITLE	
MATERIAL					
QUANTITY					
		SIZE C		DWG NO	
		SCALE		Parts Book Grease Points	
				REV	
				SHEET 1 OF 4	

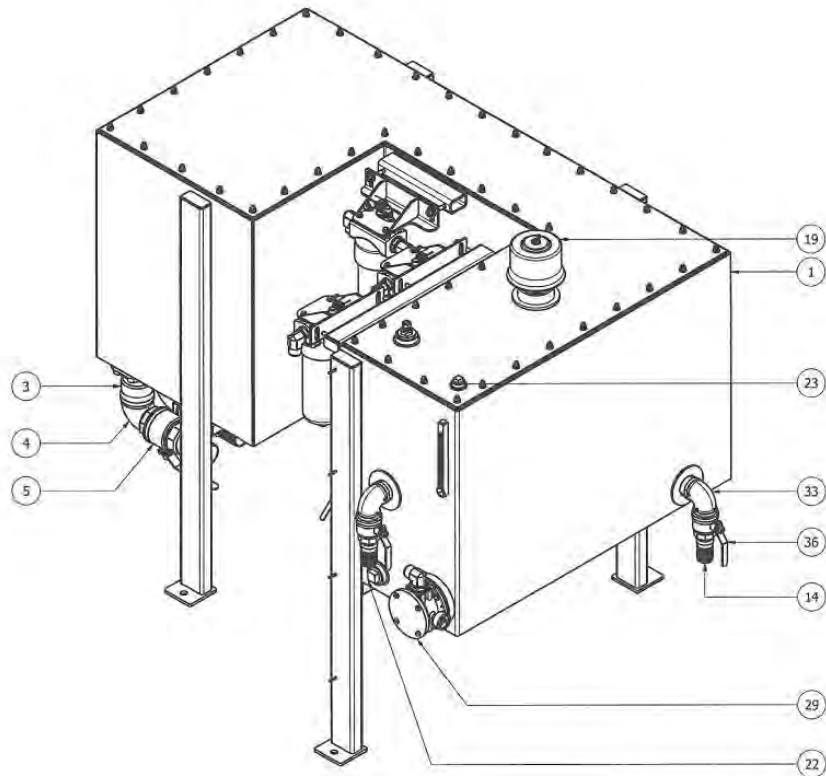


PARTS LIST			
ITEM	QTY	PART NUMBER	DESCRIPTION
1	1	904-2500	Oil Tank Assembly
2	6	338-1988-48sfo	3" Split Flange O-Ring
3	3	904-0846	3" O-RING TO 3" PIPE
4	3	336b-5502-48	90 Degree 3" Street Elbow
5	3	331-6048	3" BALL VALVE
6	2	904-0845	2" O-RING TO 2" PIPE
7	3	336b-kn48	3" Barb king nipple
8	5	336-2404-16-16	#16 MALE JIC TO 1" MALE PIPE
9	5	331-6016	1" BALL VALVE (M/F)
10	1	331-6016-1	1" Brass Ball Valve
11	1	331-6016-01	1" Brass Ball Valve Handle
12	5	336-5502-16-16	1" 90 ELBOW F/M
14	2	336b-kn32	2" Barb King Nipple
15	3	332-0053	FILTER ASSEMBLY -HI PRESSURE (BALER)
16	6	336-6801-20-20	1-1/4" MJIC x 1-1/4" o-ring
17	4	338-1988-32sfo	#32 Flange Kit Code 61 - 2"
18	2	331-6032	2" BRASS BALL VALVE (F/F)
19	1	332-0054	Breather Assembly
20	1	335-1100	Oil Level Gauge
21	1	336-6801-16-20	1" MJIC x 1-1/4" o-ring
22	1	336b-5406-32	2" Pipe Plug
23	2	336b-5406-16	1" Pipe Plug
24	12	ASME B18.21.1 - 3/8 Extra-Duty, Lock Washers (Inch Series)Extra-Duty Helical Spring Lock Washer	Lock Washers (Inch Series)Extra-Duty Helical Spring Lock Washer
25	6	ASME B18.21.1 - 1/2 Extra-Duty, Lock Washers (Inch Series)Extra-Duty Helical Spring Lock Washer	Lock Washers (Inch Series)Extra-Duty Helical Spring Lock Washer
26	12	ANSI/ASME B18.2.1 - 3/8-16 UNC - 1	Hex Bolt - UNC (Regular Thread - Inch)
27	6	ANSI B18.2.2 - 1/2 - 13	Hex Nuts (Inch Series) Hex Nut
28	3	941173RT	Electrical Indicator
29	1	332-0050	Low Pressure Filter (Schroeder)
30	4	205-6406	3/8" Lock Washer
31	4	205-6006	3/8" Flat Washer
32	4	205-0608	3/8"-16 x 1" Grade 5 Bolt
33	2	336b-5504-32	2" Black Pipe 90
35	1	904-2511-1	
36	2	331-6032-1	2" BRASS BALL VALVE (M/F)
37	3	904-2024	Filter Mount w/ Gusset
38	6	ANSI B18.22.1 - 1/2 - wide - Type A	Plain Washer (Inch)Type A and B
39	2	336b-5404-32-6	2" x 6" Black Pipe Nipple
40	2	336b-5405-32	2" Sch. 40 Coupling
41	2	336-1404-32-32	
42	1	336-6404-6-4	9/16-18 Fern. O Ring x 7/16-20 MP



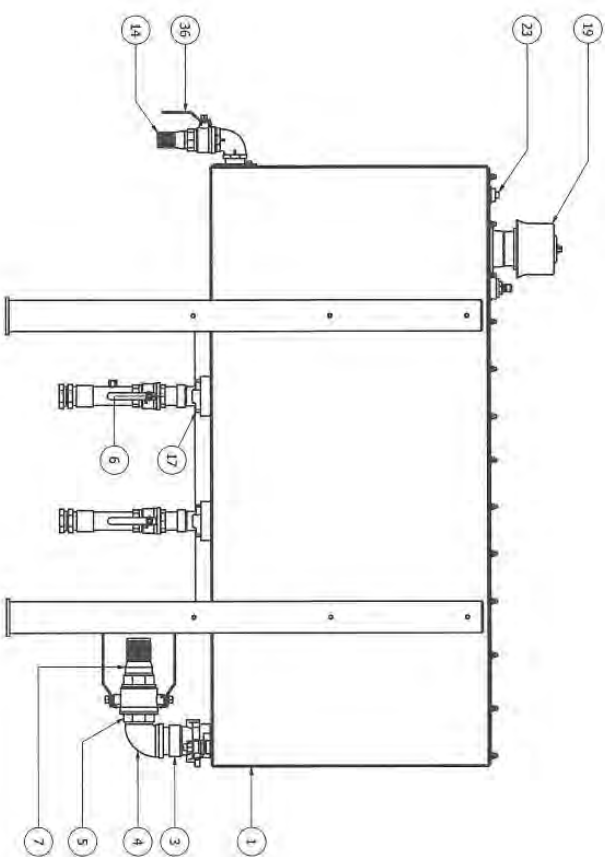
DRAWN Schaun S.	11/5/2010	 <small> 4000 N. 20th St. 1-800-542-7445 WWW.OVERBUILT.COM </small>	
CHECKED		TITLE	
QA		STANDARD BALER HYDRAULIC OIL TANK ASSEMBLY	
MATERIAL SEE PARTS LIST			
QUANTITY 1 PER UNIT		SIZE C	DWG NO 904-2500 Assembly REV
		SCALE	SHEET 1 OF 4


PARTS LIST			
ITEM	QTY	PART NUMBER	DESCRIPTION
1	1	904-2500	Oil Tank Assembly
2	6	338-1988-48sfo	3" Split Flange O-Ring
3	3	904-0846	3" O-RING TO 3" PIPE
4	3	336b-5502-48	90 Degree 3" Street Elbow
5	3	331-6048	3" BALL VALVE
6	2	904-0845	2" O-RING TO 2" PIPE
7	3	336b-kn48	3" Barb king nipple
8	5	336-2404-16-16	#16 MALE JIC TO 1" MALE PIPE
9	5	331-6016	1" BALL VALVE (M/F)
10	1	331-6016-1	1" Brass Ball Valve
11	1	331-6016-01	1" Brass Ball Valve Handle
12	5	336-5502-16-16	1" 90 ELBOW F/M
14	2	336b-kn32	2" Barb King Nipple
15	3	332-0053	FILTER ASSEMBLY -HI PRESSURE (BALER)
16	6	336-6801-20-20	1-1/4" MJIC x 1-1/4" o-ring
17	4	338-1988-32sfo	#32 Flange Kit Code 61 - 2"
18	2	331-6032	2" BRASS BALL VALVE (F/F)
19	1	332-0054	Breather Assembly
20	1	335-1100	Oil Level Guage
21	1	336-6801-16-20	1" MJIC x 1-1/4" o-ring
22	1	336b-5406-32	2" Pipe Plug
23	2	336b-5406-16	1" Pipe Plug
24	12	ASME B18.21.1 - 3/8 Extra-Duty, Lock Washers (Inch Series)Extra-Duty Helical Spring Lock Washer	Lock Washers (Inch Series)Extra-Duty Helical Spring Lock Washer
25	6	ASME B18.21.1 - 1/2 Extra-Duty, Lock Washers (Inch Series)Extra-Duty Helical Spring Lock Washer	Lock Washers (Inch Series)Extra-Duty Helical Spring Lock Washer
26	12	ANSI/ASME B18.2.1 - 3/8-16 UNC - 1	Hex Bolt - UNC (Regular Thread - Inch)
27	6	ANSI B18.2.2 - 1/2 - 13	Hex Nuts (Inch Series) Hex Nut
28	3	941173RT	Electrical Indicator
29	1	332-0050	Low Pressure Filter (Schroeder)
30	4	205-6406	3/8" Lock Washer
31	4	205-6006	3/8" Flat Washer
32	4	205-0608	3/8"-16 x 1" Grade 5 Bolt
33	2	336b-5504-32	2" Black Pipe 90
35	1	904-2511-1	
36	2	331-6032-1	2" BRASS BALL VALVE (M/F)
37	3	904-2024	Filter Mount w/ Gusset
38	6	ANSI B18.22.1 - 1/2 - wide - Type A	Plain Washer (Inch)Type A and B
39	2	336b-5404-32-6	2" x 6" Black Pipe Nipple
40	2	336b-5405-32	2" Sch. 40 Coupling
41	2	336-1404-32-32	
42	1	336-6404-6-4	9/16-18 Fem. O Ring x 7/16-20 MP

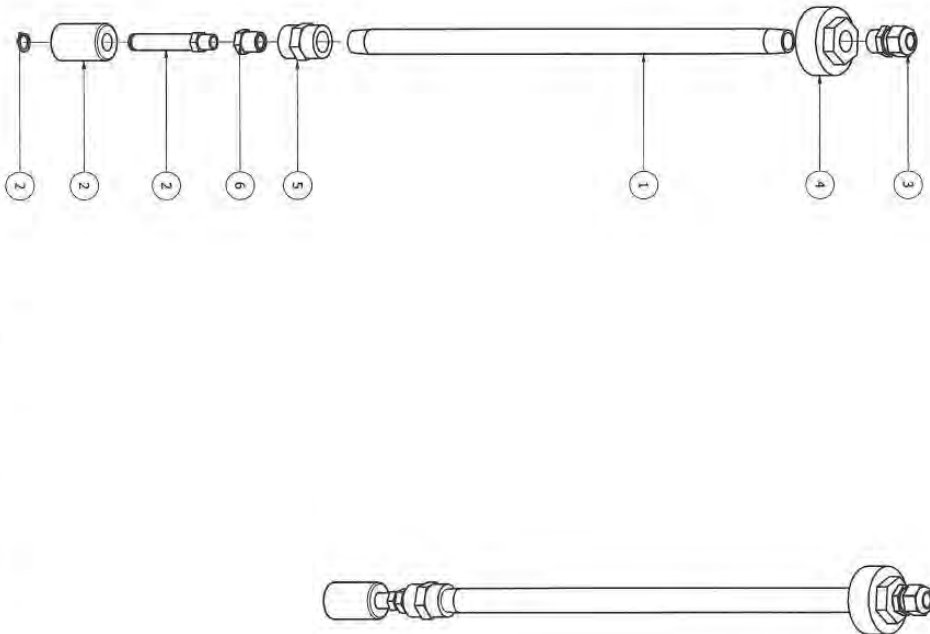


DRAWN Schaun S. CHECKED	11/5/2010	 <small> 11/01/10 11/05/10 11/05/10 11/05/10 11/05/10 11/05/10 </small>	
QA		TITLE	
MATERIAL SEE PARTS LIST		STANDARD BALER HYDRAULIC OIL TANK ASSEMBLY	
QUANTITY 1 PER UNIT			
		SIZE C	DWG NO 904-2500 Assembly
		SCALE	REV
			SHEET 2 OF 4


PARTS LIST			
ITEM	QTY	PART NUMBER	DESCRIPTION
1	1	904-2500	Oil Tank Assembly
2	6	338-1988-46860	3" Split Flange O-Ring
3	3	904-0846	3" O-RING TO 3" PIPE
4	3	338b-5502-48	90 Degree 3" Street Elbow
5	3	331-6048	3" BALL VALVE
6	2	904-0845	2" O-RING TO 2" PIPE
7	3	338b-kn48	3" Barb King nipple
8	3	338b-2404-16-16	#16 MALE JIC TO 1" MALE PIPE
9	5	331-6016	1" BALL VALVE (M/F)
10	1	331-6016-1	1" Brass Ball Valve
11	1	331-6016-01	1" Brass Ball Valve Handle
12	5	338-5502-16-16	1" 90 ELBOW F/M
14	2	338b-kn32	2" Barb King Nipple
15	3	332-0053	FILTER ASSEMBLY #11 PRESSURE (BALER)
16	6	338-6801-20-20	1-1/4" NUTIC x 1-1/4" o-ring
17	4	338-1988-32870	#32 Flange Kit Code 6L - 2"
18	2	331-6032	2" BRASS BALL VALVE (F/F)
19	1	332-0054	Breather Assembly
20	1	335-1100	Oil Level Gauge
21	1	338-6801-16-20	1" NUTIC x 1-1/4" o-ring
22	1	338b-5406-32	12" Pipe Plug
23	2	338b-5406-16	1" Pipe Plug
24	12	ASME B18.21.1 - 3/8	Lock Washers (Inch Series)Extra Duty Helical Spring Lock Washer
25	6	ASME B18.21.1 - 1/2	Lock Washers (Inch Series)Extra Duty Helical Spring Lock Washer
26	12	ANSI/ASME B18.2.1 -	Hex Bolt - UNC (Regular Thread - Inch)
27	6	ANSI B18.2.2 - 1/2 - 13	Hex Nuts (Inch Series) Hex Nut
28	3	941173RT	Electrical Indicator
29	1	332-0050	Low Pressure Filter (Schroeder)
30	4	205-6406	3/8" Lock Washer
31	4	205-6406	3/8" Flat Washer
32	4	205-0608	3/8" -16 x 1" Grade 5 Bolt
33	2	338b-5504-32	2" Black Pipe 90
35	1	904-2511-1	2" BRASS BALL VALVE (M/F)
36	2	331-6032-1	2" BRASS BALL VALVE (M/F)
37	3	904-2024	Filter Mount w/ Gasket
38	6	ANSI B18.2.1 - 1/2 - wide	Plan Washer (Inch) Type A and B
39	2	338b-5404-32-6	2" x 6" Black Pipe Nipple
40	2	338b-5405-32	2" SCH. 40 Coupling
41	2	338b-1404-32-32	7/16-18 Fem. O Ring x
42	1	338b-6404-6-4	7/16-20 MP

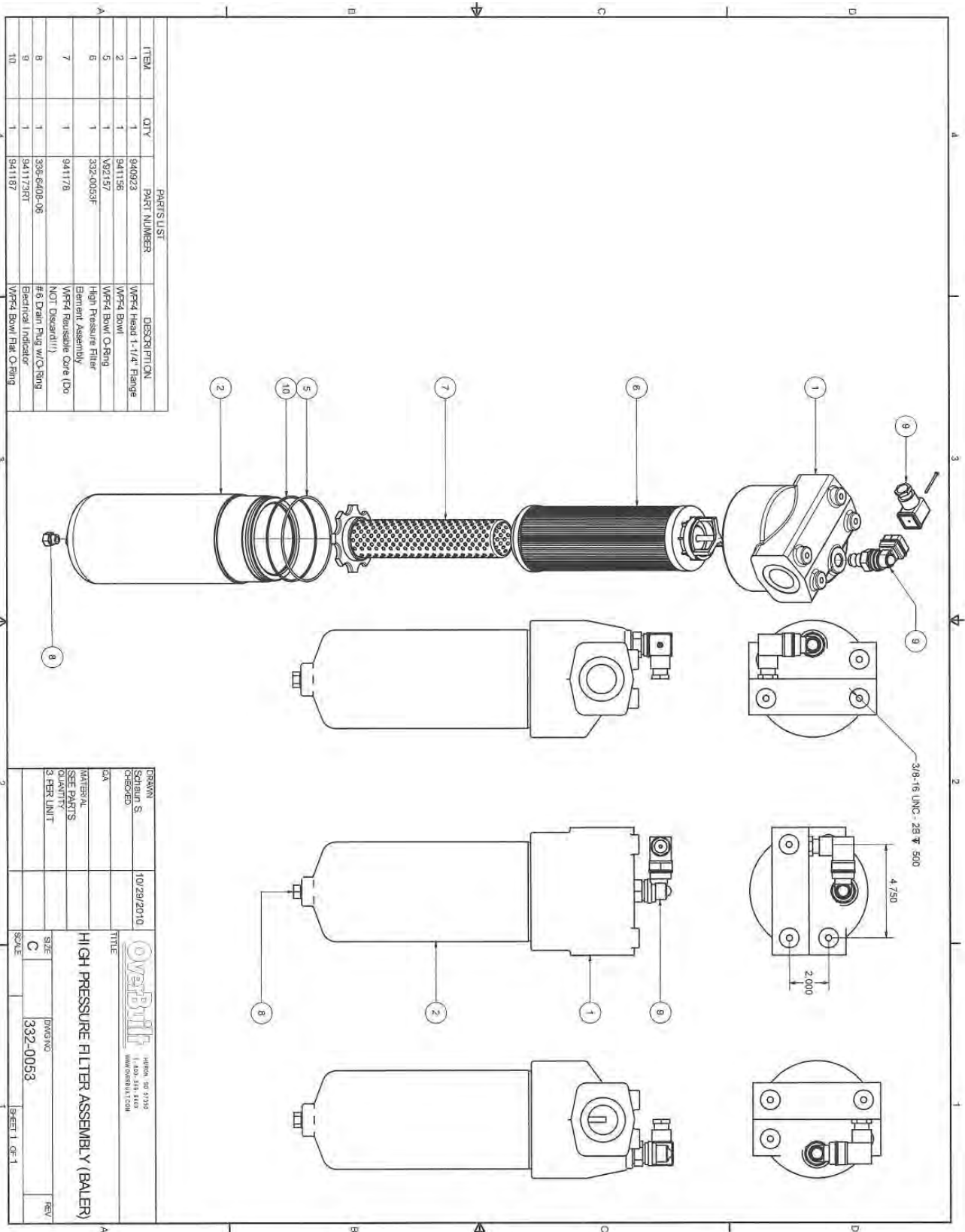


DRAWN SCHAUB S.	11/5/2010	 <small>INDEPENDENT MANUFACTURING</small>	
CHECKED		TITLE	
MATERIAL SEE PARTS LIST		STANDARD BALER HYDRAULIC OIL TANK ASSEMBLY	
QUANTITY 1 PER UNIT		SIZE C	DWG NO. 904-2500 Assembly
SCALE		1	SHEET 3 OF 4
		REV	



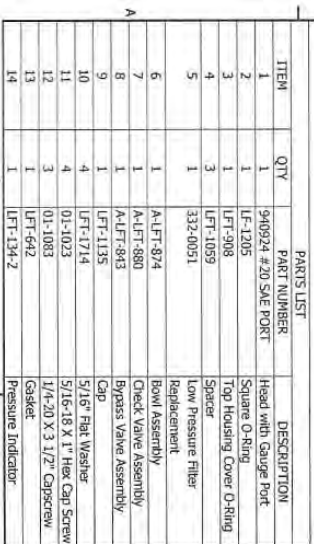
PARTS LIST		
ITEM	QTY	DESCRIPTION
1	1	3368-5404-08-18 1/2" NPT Nipple X 18" long
2	1	348-1001 Oil Level Sending Unit Assembly (FS22-1000)
3	1	300-1608 500 Strain Relief
4	1	3368-6410-8-16 Double Tap 2" x 1/2"
5	1	336-5000-8-6 Coupling 8 FNPT x 6 FNPT
6	1	336-5406-6-4 Reducing Bushing 3/8" x 1/4"


DESIGN		DATE	
SUBMIT S.	11/5/2010	 LIFE OF 67704 1000-524-406 NEW YORK, NY 10011	
CHANGED			
QA			
MATERIAL			
SEE PARTS LIST			
QUANTITY			
1 PER UNIT			
TITLE		STANDARD BALER HYDRAULIC OIL TANK ASSEMBLY	
SIZE		DWG NO	
C		904-2500 Assembly	
SCALE		SHEET 4 OF 4	

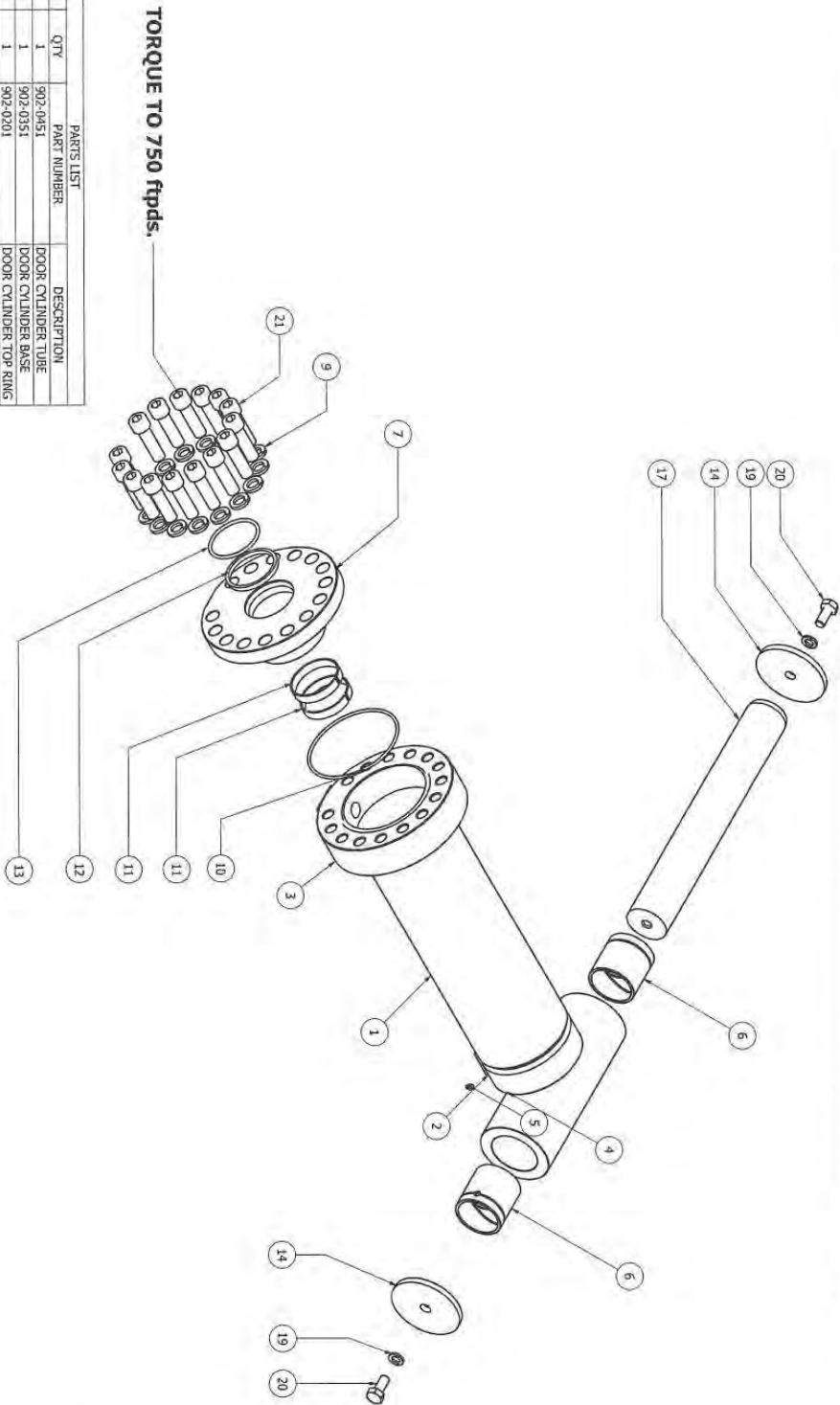


PARTS LIST		
ITEM	QTY	DESCRIPTION
1	1	WPF4 Head 1-1/4" Flange
2	1	WPF4 Bowl
5	1	WPF4 Bowl O-Ring
6	1	High Pressure Filter Element Assembly
7	1	WPF4 Reusable Core (Do NOT Discard!!)
8	1	306-6408-06 #5 Drain Plug w/O-Ring
9	1	Electrical Indicator
10	1	WPF4 Bowl Flat O-Ring

DESIGN		DATE	
Schnur S.		10/29/2010	
CHECKED		TITLE	
G.A.		HIGH PRESSURE FILTER ASSEMBLY (BALER)	
MATERIAL		DWG NO	
SEE PARTS		332-0053	
QUANTITY		REV	
3 PER UNIT		C	
SCALE		SHEET 1 OF 1	



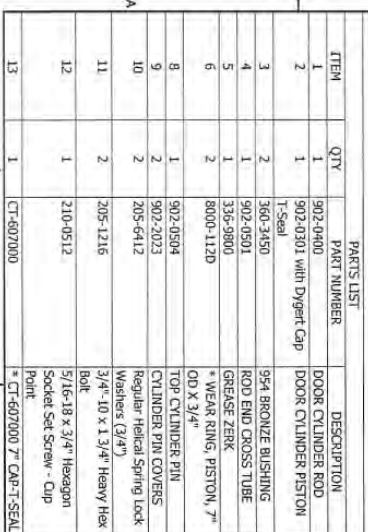
PREPARED Schuam S.	11/2/2010	 <small>1000 10th St. SE, Suite 100 Atlanta, GA 30316 Phone: 404.525.1779 Web: Overbuilt.com</small>	
CHECKED		TITLE	
MATERIAL SEE PARTS QUANTITY 1 PER UNIT		Schroeder Low Pressure Filter Assembly for Baler	
	SIZE C	DWG NO 332-0050	REV
	SCALE		
		SHEET 1 OF 1	



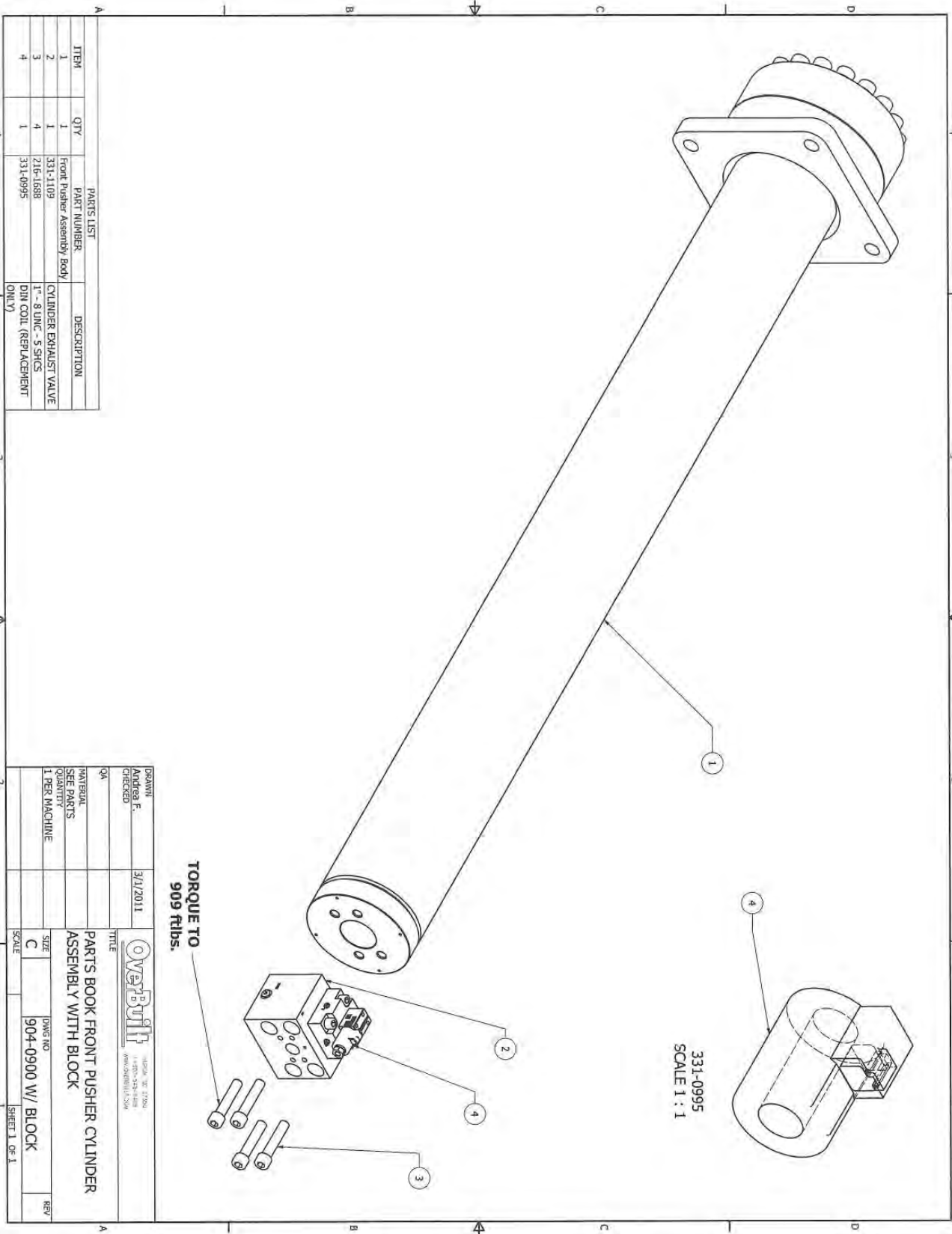
PARTS LIST		
ITEM	QTY	DESCRIPTION
1	1	DOOR CYLINDER TUBE
2	1	DOOR CYLINDER BASE
3	1	DOOR CYLINDER TOP RING
4	1	DOOR CYLINDER CROSS TUBE
5	1	GREASE ZERK
6	2	360 3-451
7	1	DOOR CYLINDER TOP GLAND
9	15	208-6420
10	1	265N90
11	2	8001-68D
12	1	2500-000-375026
13	1	DX-4000
14	2	902-2023
15	2	902-0503
16	2	205-6412
17	2	205-1216
18	2	205-1216
19	2	205-1216
20	2	205-1216
21	15	208-1656

*** = ONLY AVAILABLE IN SEAL KIT 334-9001 (INDIVIDUAL PARTS NOT AVAILABLE SEPERATELY.)**

DRAWN Schaub S. CHECKED QA		9/17/2010	OverBuilt PARTS BOOK 904-0001	
MATERIAL SEE PARTS QUANTITY 6 PER MACHINE			Parts Book Door Cylinder Assembly SIZE C DWG NO 904-0001 SHEET 1 OF 2	

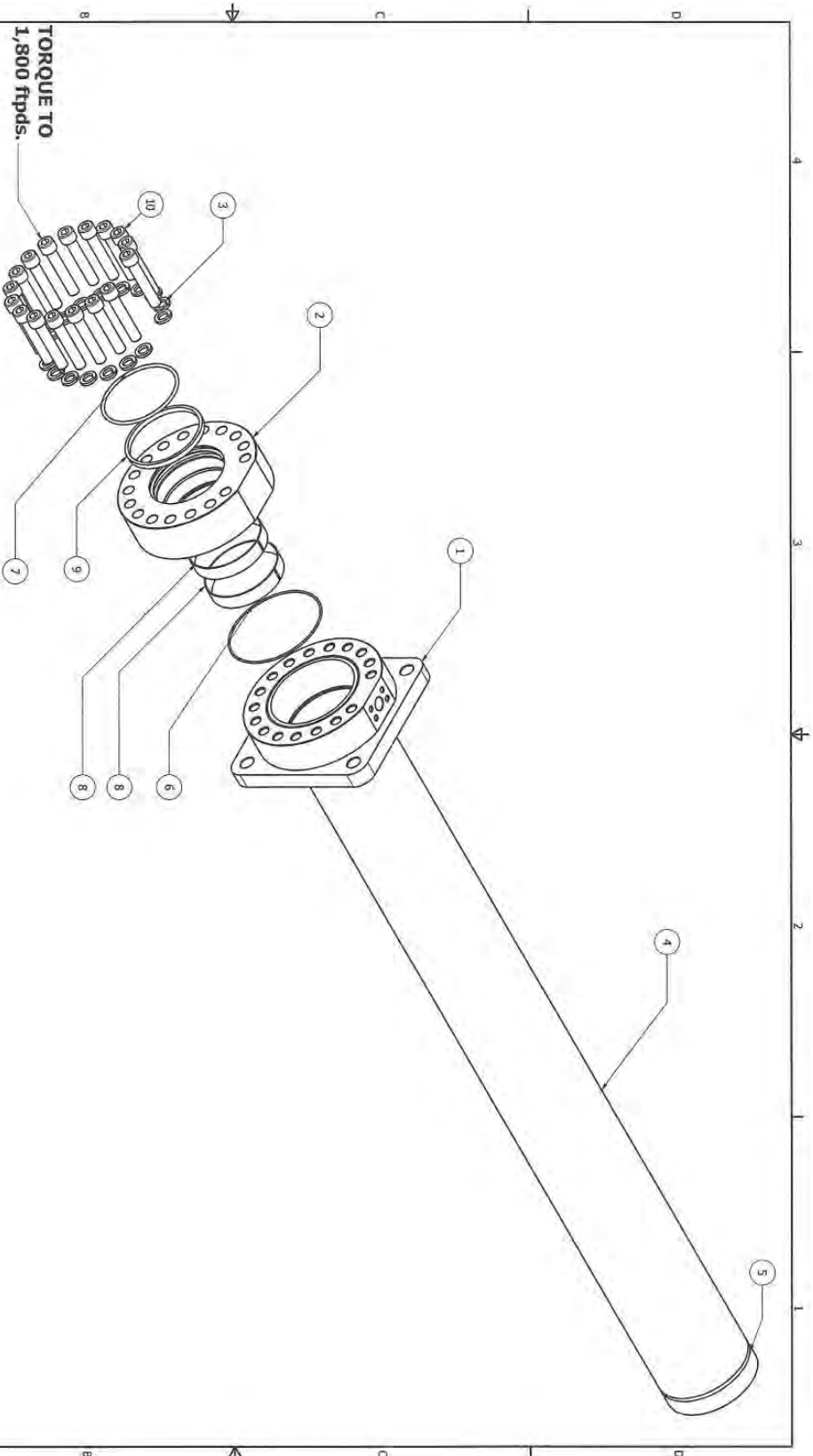


DRAWN S. SORAN		9/17/2010		 <small>©2009 J.B. Smith Inc. 1110-C-04-0497 REV 09/08/11/10</small>	
CHECKED				TITLE	
MATERIAL SEE PARTS QUANTITY 6 PER MACHINE				Parts Book Door Cylinder Assembly	
SIZE C		DWG NO. 904-0001		REV	
SCALE				SHEET 2 OF 2	



PARTS LIST		
ITEM	QTY	DESCRIPTION
1	1	Front Pusher Assembly Body
2	1	331-1109
3	4	216-1688
4	1	331-0995

DRAWN	3/1/2011	TITLE	
CHECKED		PARTS BOOK FRONT PUSHER CYLINDER	
QA		ASSEMBLY WITH BLOCK	
MATERIAL		SIZE	
SEE PARTS		C	
QUANTITY		DIMS NO	
1 PER MACHINE		904-0900 W/ BLOCK	
		REV	
		SCALE	
		SHEET 1 OF 1	



TORQUE TO
1,800 ftlbs.

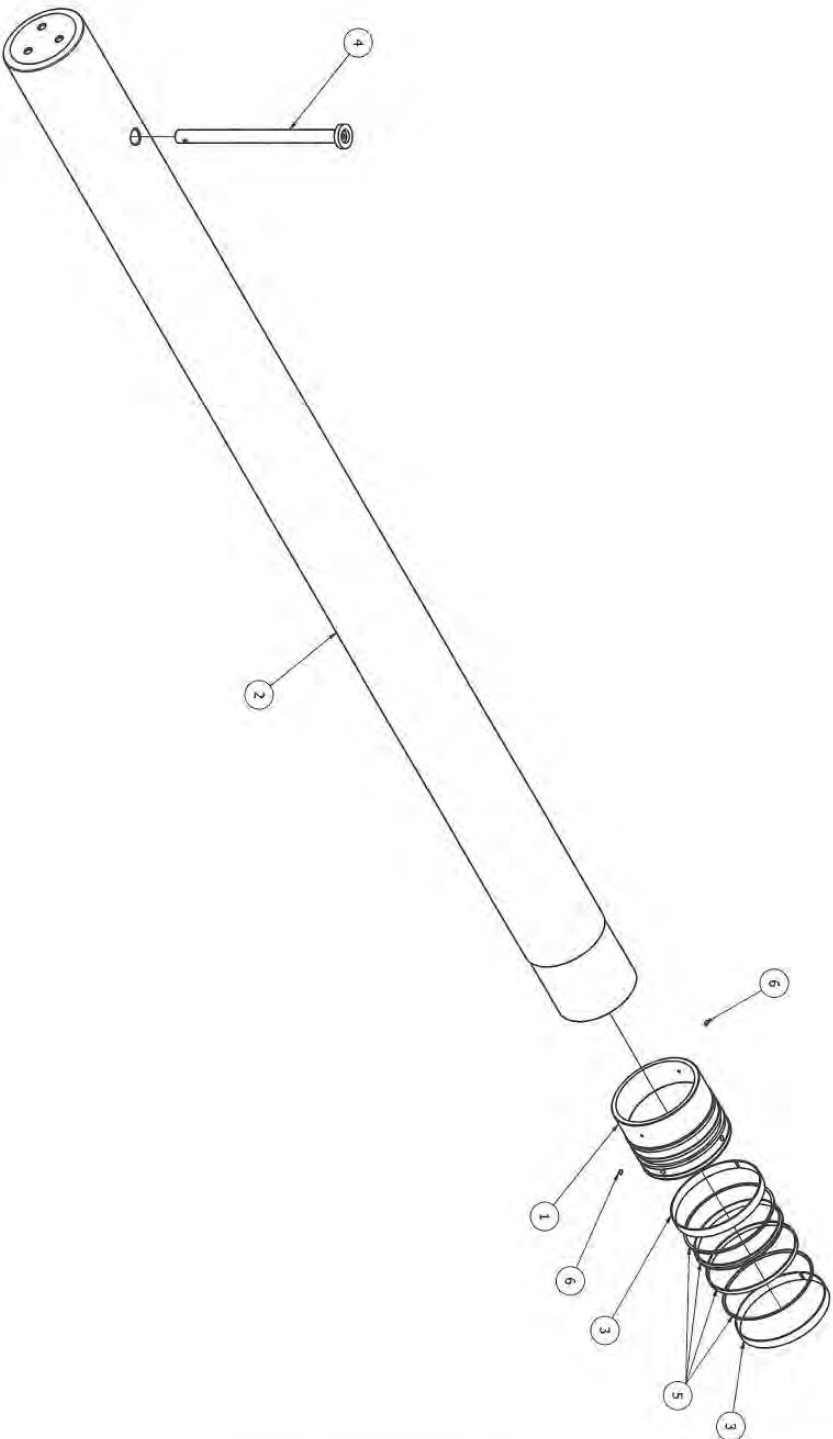
PARTS LIST		
ITEM	QTY	PART NUMBER
1	1	902-0945
2	1	902-0660
3	17	208-6820
4	1	902-0905
5	1	902-0657
6	1	277N90
7	1	DT-9000
8	2	8001-148H
9	1	37509000-625022
10	17	216-20120

DESCRIPTION	
Pusher Cylinder Top Ring	
10" I.D. CYLINDER TOP	
GLAND 9" ROD	
1 1/4" High Collar Lock Washers(Each Series)	
100" (Small) Front Cylinder Tube	
10" Cylinder Base	
* 568-477 O-RING CNPD	
H-9001	
* DT WIPER, U-1003, 9" ID	
* WEAR RING ROD, 9" ID X 1 3/4"	
* DEEP Z, F-1504 BASE	
1 1/4" x 7 1/2" Hexagon Socket Head Cap Screw (SHCS)	

*** = ONLY AVAILABLE IN SEAL KIT 334-9002 (INDIVIDUAL PARTS NOT AVAILABLE SEPERATELY.)**

DRAWN: Schmitt S.		9/21/2010	
CHECKED:			
QA:			
MATERIAL:			
SEE PARTS:			
QUANTITY:			
1 PER MACHINE:			
SIZE:		DWG NO.	
C		904-0900	
SCALE:		REV	
1		SHEET 1 OF 2	

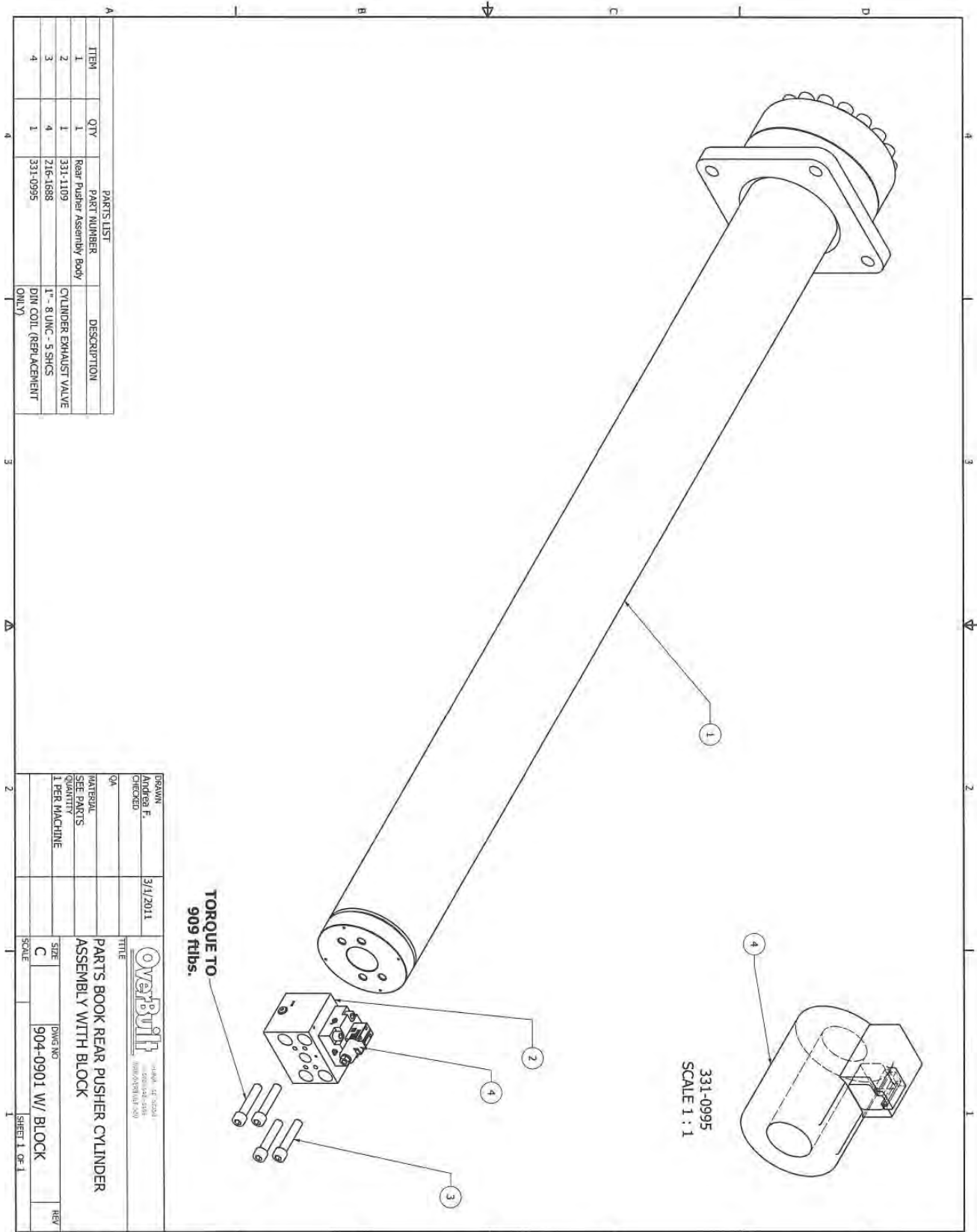
OVERBUILT
PARTS BOOK FRONT PUSHER CYLINDER ASSEMBLY
(100" FRONT)



PARTS LIST			
ITEM	QTY	PART NUMBER	DESCRIPTION
1	1	902-615	902-615 tube stock w/ sleeve with Microdactyl Polyseal
2	1	902-0925	FRONT CYLINDER ROD
3	2	WG112510000-1000	* WEAR RING 10" OD X 1" WIDE
4	1	Pin Assembly-26	* Seal Kit
5	1	CT-610000	CT-610000-41HS07
6	2	210-0512	5/16-18 x .440 SET SCREW

*** = ONLY AVAILABLE IN SEAL KIT 334-9002 (INDIVIDUAL PARTS NOT AVAILABLE SEPERATELY.)**

DESIGNED BY Schmitt S.	DATE 9/21/2010	OVERBUILT	
CHECKED BY QA		TITLE Parts Book Front Pusher Cylinder Assembly (100" Front)	
MATERIAL SEE PARTS		DWG NO 904-0900	
QUANTITY 1 PER MACHINE		SCALE 1" = 10"	
		SHEET 2 OF 2	



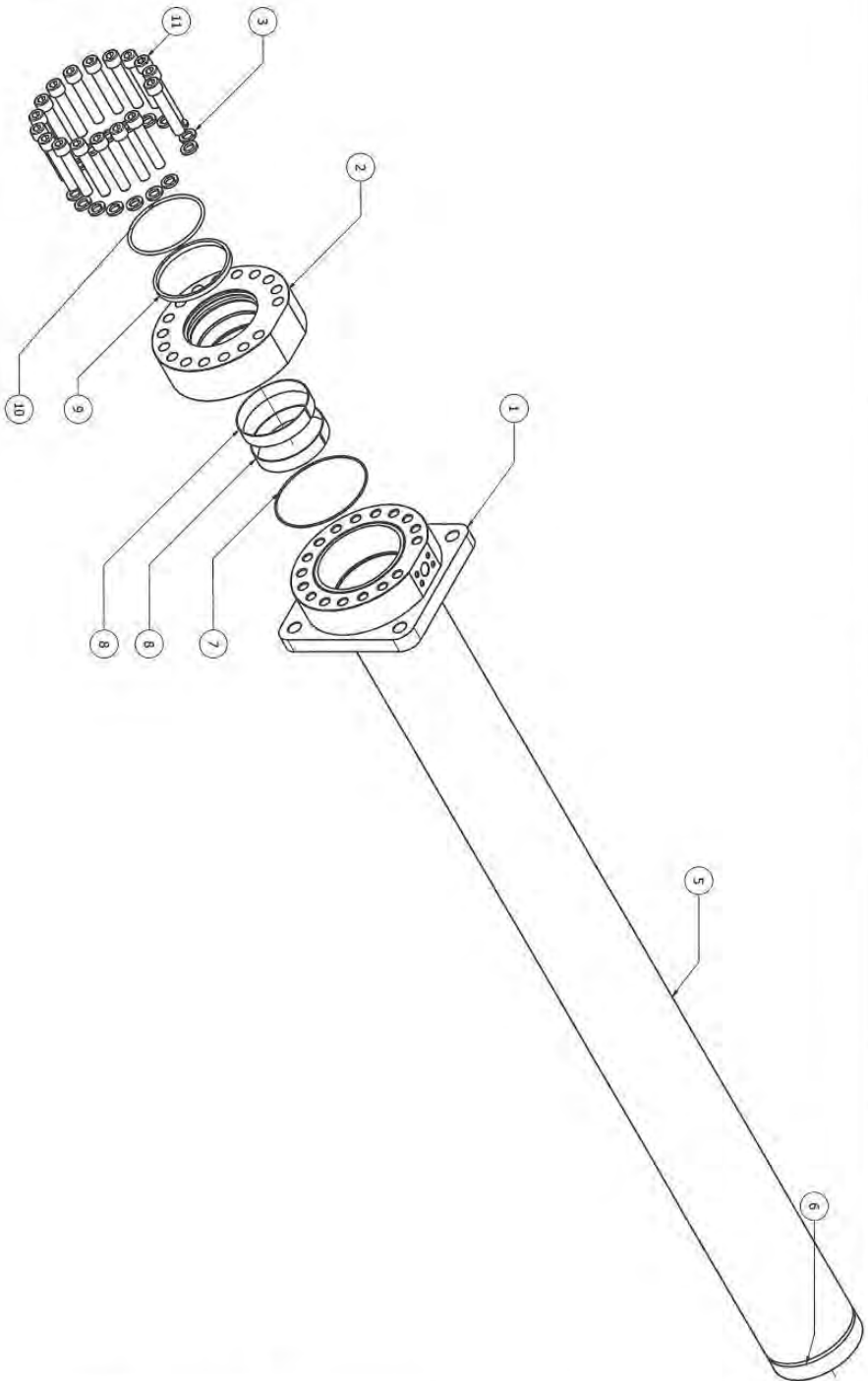
331-0995
SCALE 1 : 1

PARTS LIST		
ITEM	QTY	PART NUMBER
1	1	331-1109
2	1	331-1109
3	4	216-1688
4	1	331-0995

DESCRIPTION	
CYLINDER EXHAUST VALVE	
1" - 8 UNC - 5 SHCS	
DIN COIL (REPLACEMENT ONLY)	

DRAWN Andrea F.		3/1/2011	
CHECKED			
QA			
MATERIAL			
SEE PARTS			
QUANTITY			
1 PER MACHINE			
TITLE		PARTS BOOK REAR PUSHER CYLINDER ASSEMBLY WITH BLOCK	
SIZE		DWG NO.	
C		904-0901 W/ BLOCK	
SCALE		REV	
1			

TORQUE TO
1,800 ftlbs

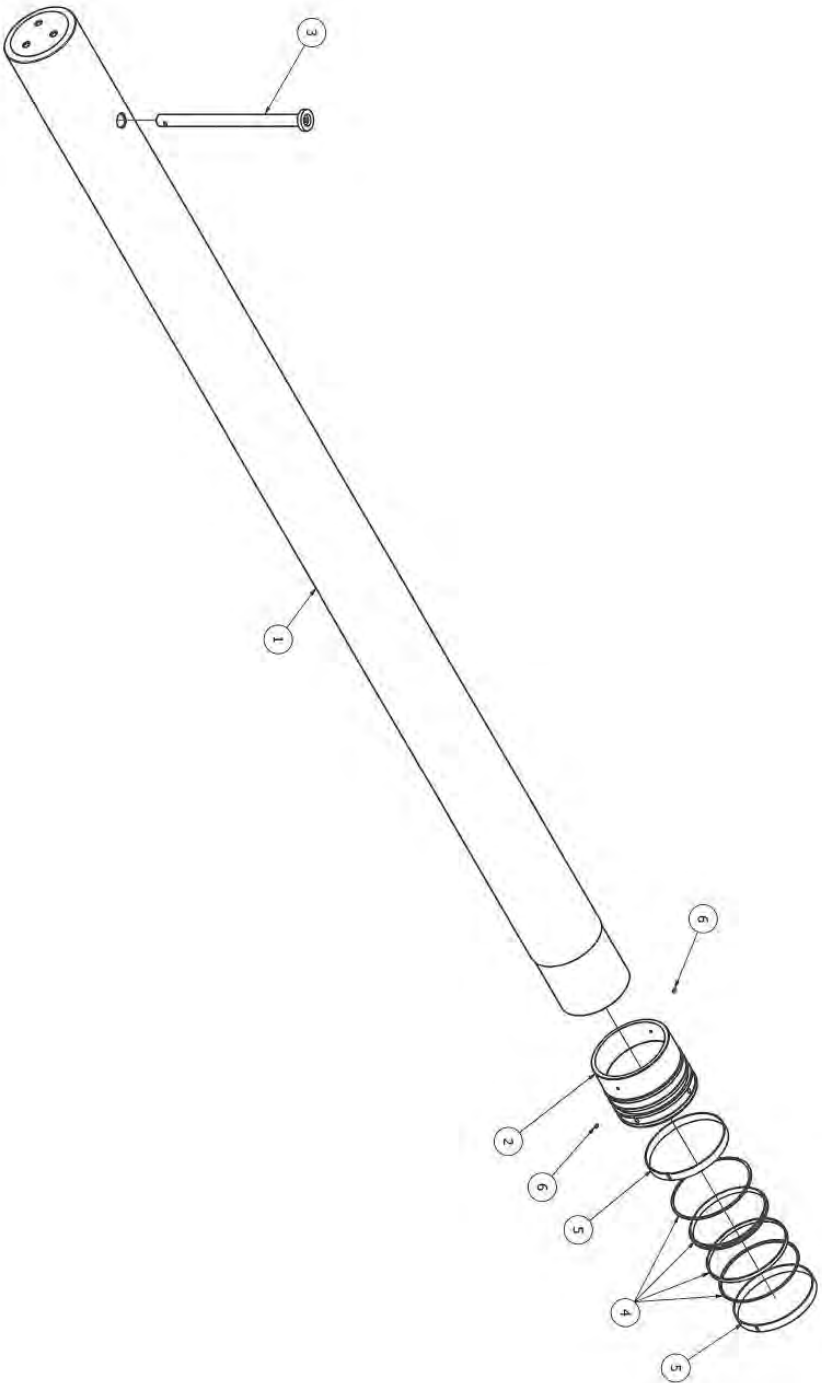


PARTS LIST		
ITEM	QTY	PART NUMBER
1	1	902-0945
2	1	902-0660
3	17	208-6820
5	1	902-0906
6	1	902-0657
7	1	277990
8	2	8001-148H
9	1	37509000-625022
10	1	DT-5000
11	17	216-20120

DESCRIPTION	
Pusher Cylinder Top Ring	
10\" ID CYLINDER TOP	
GLAND 9\" ROD	
1 1/4\" High Collar Lock	
Washers(Inch Series)	
118\" (S) Rear Cylinder Tube	
10\" Cylinder Base	
* S58-277 O-RING CMPD	
N-9001	
* WEAR RING ROD, 9\" ID X	
1 3/4\"	
* DEEP Z, F-150H BASE	
* DT-5000	
1 1/4\" x 7 x 1/2\" Hexagon	
Socket Head Cap Screw	
(SHCS)	

*** = ONLY AVAILABLE IN
SEAL KIT 334-9002
(INDIVIDUAL PARTS
NOT AVAILABLE SEPERATELY.)**

DRAWN SCHUBIN S.	9/23/2010	 "OVERBUILT" IS A TRADE NAME REGISTERED BY OVERBUILT, INC.
CHECKED		
QA		
MATERIAL SEE PARTS QUANTITY 1 PER MACHINE		
TITLE Parts Book Rear Pusher Cylinder Assembly (118\" Rear)		
SIZE C	DWG NO. 904-0901	REV
SCALE		



PARTS LIST	
ITEM	DESCRIPTION
1	902-0926XTRA Plated (long)
2	902-615 tube stock w sleeve with Macrotech Polyseal
3	Pin Assembly-26 CT-6-10000
4	* Seal Kit CT-6-10000-41HS07
5	* WEAR RING 10" OD X 1" WIDE
6	5/16-18 X .440 SET SCREW

*** = ONLY AVAILABLE IN SEAL KIT 334-9002 (INDIVIDUAL PARTS NOT AVAILABLE SEPERATELY.)**

DESIGNED BY	9/23/2010	OVERBUILT	
CHECKED BY		PARTS REAR PUSHER CYLINDER ASSEMBLY (118" REAR)	
MATERIAL		SIZE	
SEE PARTS		C	
QUANTITY		DWG NO	
1 PER MACHINE		904-0901	
		SHEET 2 OF 2	



780 West Park Ave NW
Huron, South Dakota 57350
Web: www.overbuilt.com
Toll Free 1-800-548-8469
Phone: (605) 352-8469
Fax: (605) 352-0881

Over-Built 165 serco Loader Controls Configurations

Crane with Foot Pedal	Description	FP Left	FP Right	LHJS - Left	LHJS - Right	LHJS - Back	LHJS - Forward	RHJS - Left	RHJS - Right	RHJS Back	RHJS - Forward
#1 Controls Configuration	Default Scrap loader	Swing Left	Swing Right	Grap Rot CCW	Grap Rot CW	Jib In	Jib Out	Grap Close	Grap Open	Main Up	Main Down
#2 Controls Configuration	Main & Jib Swap	Swing Left	Swing Right	Grap Rot CCW	Grap Rot CW	Main Up	Main Down	Grap Close	Grap Open	Jib In	Jib Out
#3 Controls Configuration	Main & Jib Swap, Jib Dir Swap	Swing Left	Swing Right	Grap Rot CCW	Grap Rot CW	Main Up	Main Down	Grap Close	Grap Open	Jib Out	Jib In
#4 Controls Configuration	Main & Jib Swap, Main Dir Swap	Swing Left	Swing Right	Grap Rot CCW	Grap Rot CW	Main Down	Main Up	Grap Close	Grap Open	Jib In	Jib Out
#5 Controls Configuration	Main & Jib Funct & Dir Swap	Swing Left	Swing Right	Grap Rot CCW	Grap Rot CW	Main Down	Main Up	Grap Close	Grap Open	Jib Out	Main Down
#6 Controls Configuration	Grap O/C & Rot Swap	Swing Left	Swing Right	Grap open	Grap Close	Jib In	Jib Out	Grap Rot CCW	Grap Rot CW	Main Up	Main Down
#7 Controls Configuration	Grap O/C & Rot Swap, O/C Dir Swap	Swing Left	Swing Right	Grap Close	Grap open	Jib In	Jib Out	Grap Rot CW	Grap Rot CCW	Main Up	Main Down
#8 Controls Configuration	Grap O/C & Rot Swap, Rot Dir Swap	Swing Left	Swing Right	Grap open	Grap Close	Jib In	Jib Out	Grap Rot CW	Grap Rot CCW	Main Up	Main Down
#9 Controls Configuration	Grap O/C & Rot Funct & Dir Swap	Swing Left	Swing Right	Grap Close	Grap open	Jib In	Jib Out	Grap Rot CW	Grap Rot CCW	Main Up	Main Down
#10 Controls Configuration	Main & Jib Swap, Grap O/C & Rot Swap	Swing Left	Swing Right	Grap open	Grap Close	Main Up	Main Down	Grap Rot CCW	Grap Rot CW	Jib In	Jib Out
#11 Controls Configuration	Scrap loader, Swing & Grap Rot Swap	Grap Rot CCW	Grap Rot CW	Swing Left	Swing Right	Jib In	Jib Out	Grap Close	Grap Open	Main Up	Main Down
#12 Controls Configuration	Grap O/C & Rot Swap, Swing & Grap Rot Swap	Grap Rot CCW	Grap Rot CW	Grap open	Grap Close	Jib In	Jib Out	Swing Left	Swing Right	Main Up	Main Down
Crane with Trigger controls	Description	LHJS trigger	RHJS Trigger	LHJS - Left	LHJS - Right	LHJS - Back	LHJS - Forward	RHJS - Left	RHJS - Right	RHJS Back	RHJS - Forward
#13 Controls Configuration	Caterpillar Controls	Grap Open	Grap Close	Swing Left	Swing Right	Jib In	Jib Out	Grap Rot CCW	Grap Rot CW	Main Up	Main Down

OPERATOR MAINTENANCE RECORD

OVERBUILT BALER/LOGGER

ITEM	DATE	HOURS	SERVICED BY	COMMENTS
250 HOUR SERVICE				
Fuel Filters				
Engine Pre-Filter				
Engine Final Filter				
Air Cleaner				
Primary Element				
Secondary Element				
Engine				
See Engine Manual				
Hydraulic Filters				
10 Micron In Tank Filter				
Loader Pilot Filter				

500 HOUR SERVICE				
Fuel Filters				
Engine Pre-Filter				
Engine Final Filter				
Air Cleaner				
Primary Element				
Secondary Element				
Engine				
See Engine Manual				
Hydraulic Filters				
10 Micron In Tank Filter				
Loader Pilot Filter				
High Pressure Cartridge & Seal				

750 HOUR SERVICE				
Fuel Filters				
Engine Pre-Filter				
Engine Final Filter				
Air Cleaner				
Primary Element				
Secondary Element				
Engine				
See Engine Manual				
Hydraulic Filters				
10 Micron In Tank Filter				
Loader Pilot Filter				

1000 HOUR/12 MONTH SERVICE				
Fuel Filters				
Engine Pre-Filter				
Engine Final Filter				
Air Cleaner				
Primary Element				
Secondary Element				
Engine				
See Engine Manual				
Hydraulic Filters				
10 Micron In Tank Filter				
Loader Pilot Filter				
High Pressure Cartridge & Seal				
Hydraulic Oil				
Change Oil				

OverBuilt

780 West Park Ave. NW
Huron, SD 57350

605-352-6469

